

Commission on Travel Demand

Key Findings & Implications

To date...

Professor Greg Marsden

Chair of Commission on Travel Demand

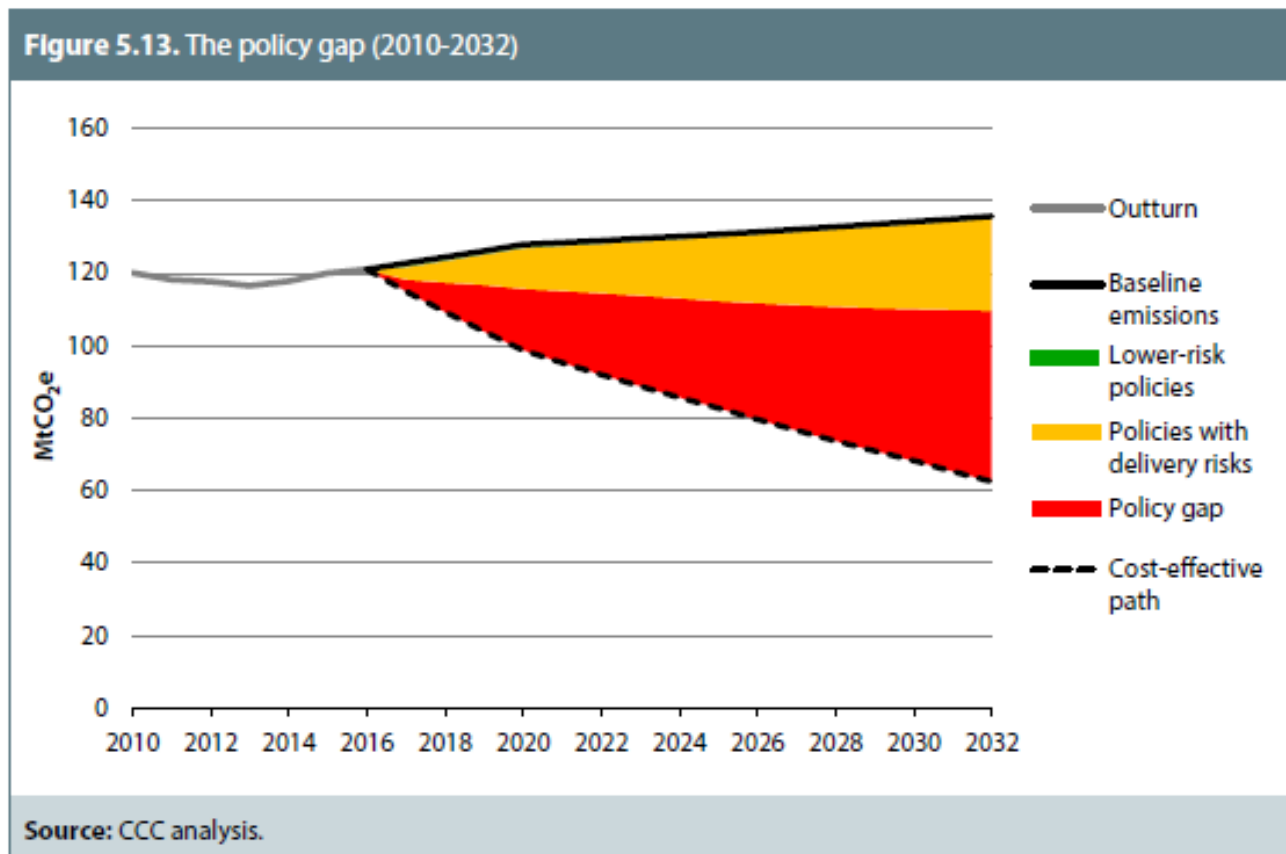
21st November 2017

What was the exam question?

- What has been happening to travel demand?
- Why has it been happening?
- What influence has policy had on this?
- How might new mobility options change this?
- What does this mean for decision-making?



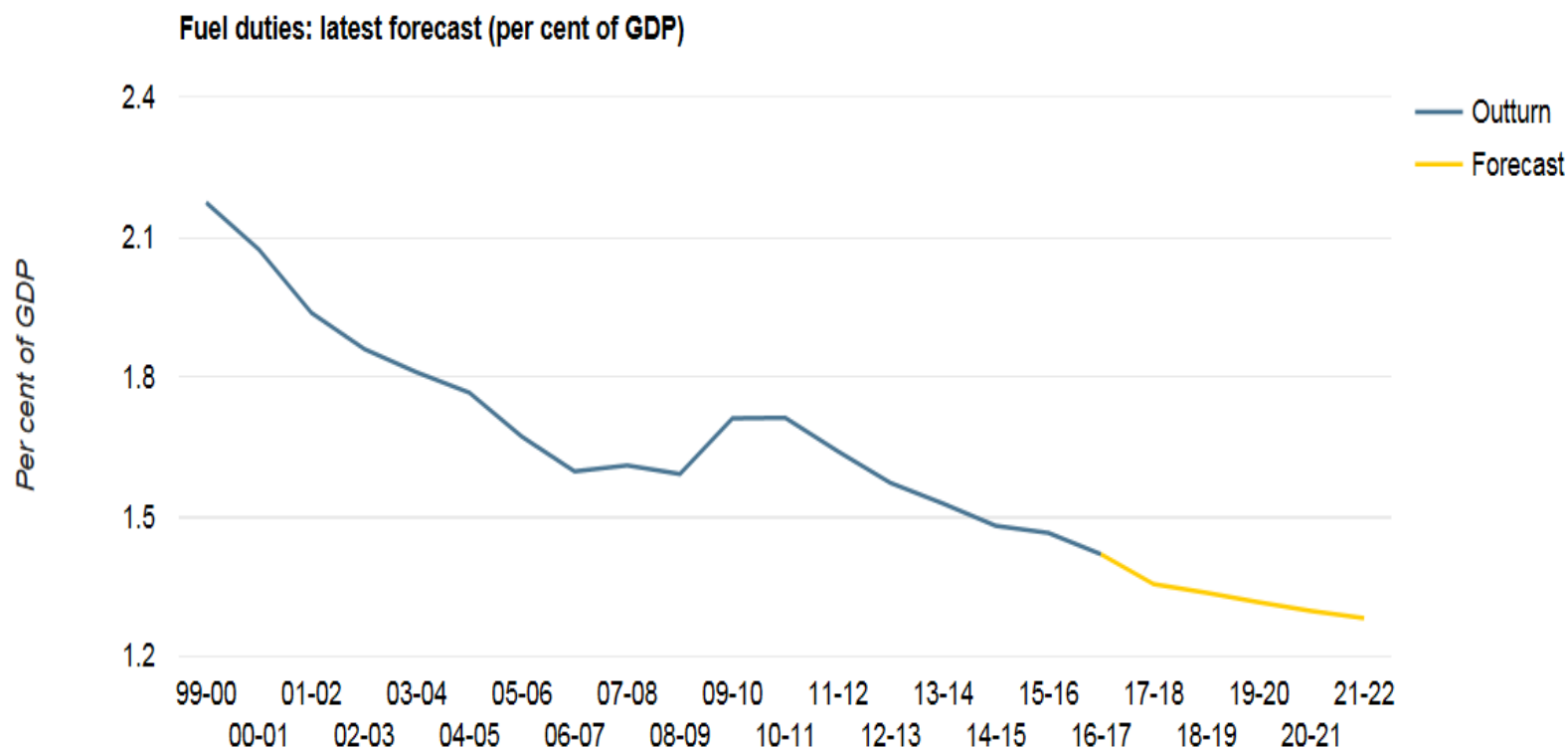
Why does it matter?



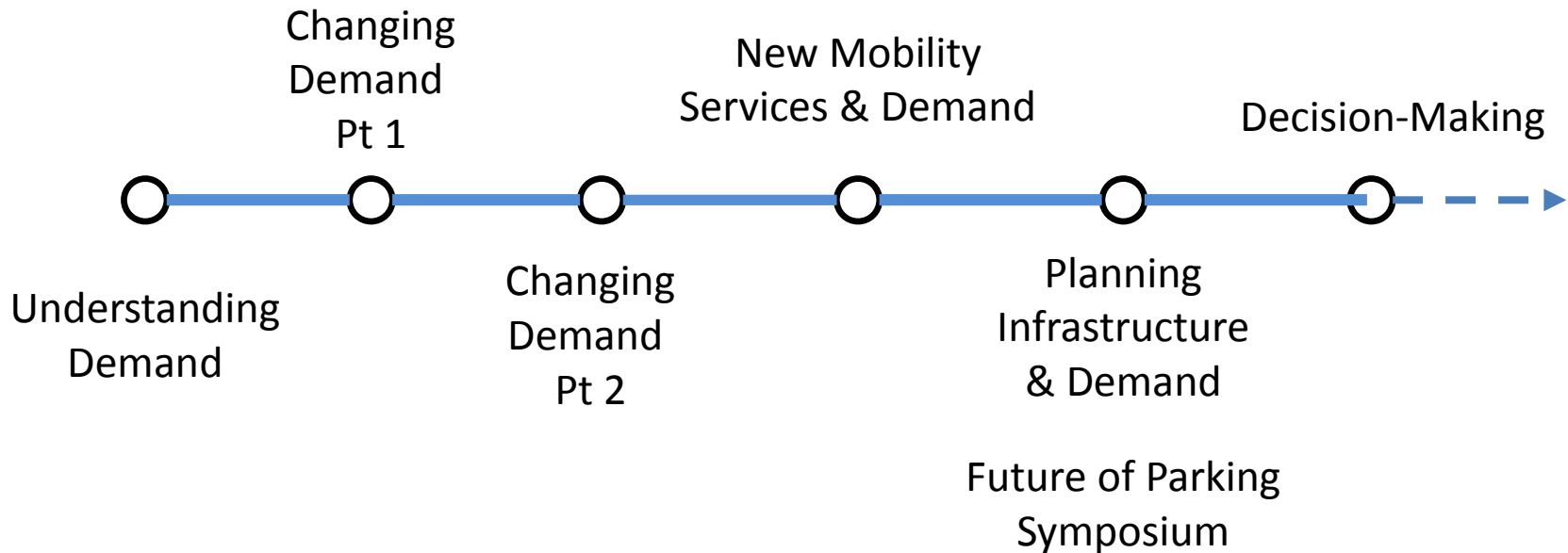
Why does it matter?



Why does it matter?

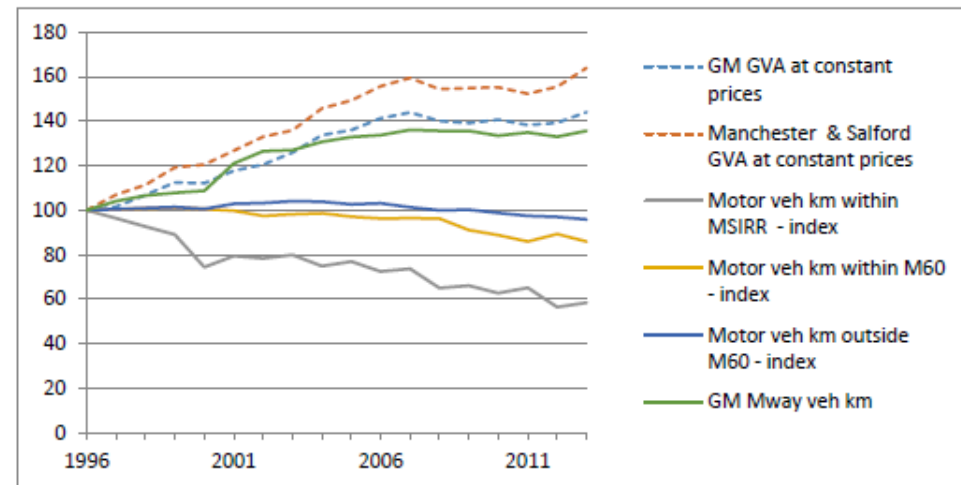
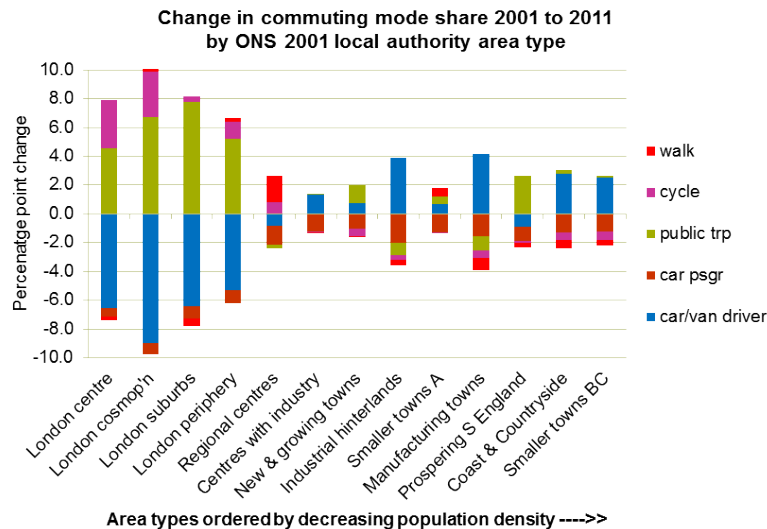


Evidence gathering process

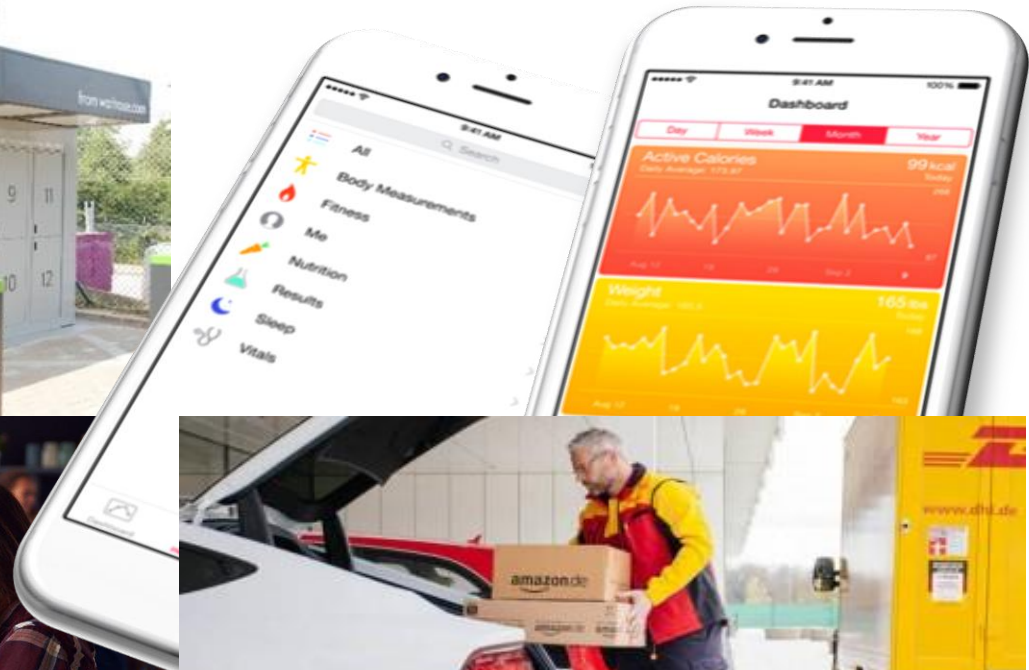


What has been happening?

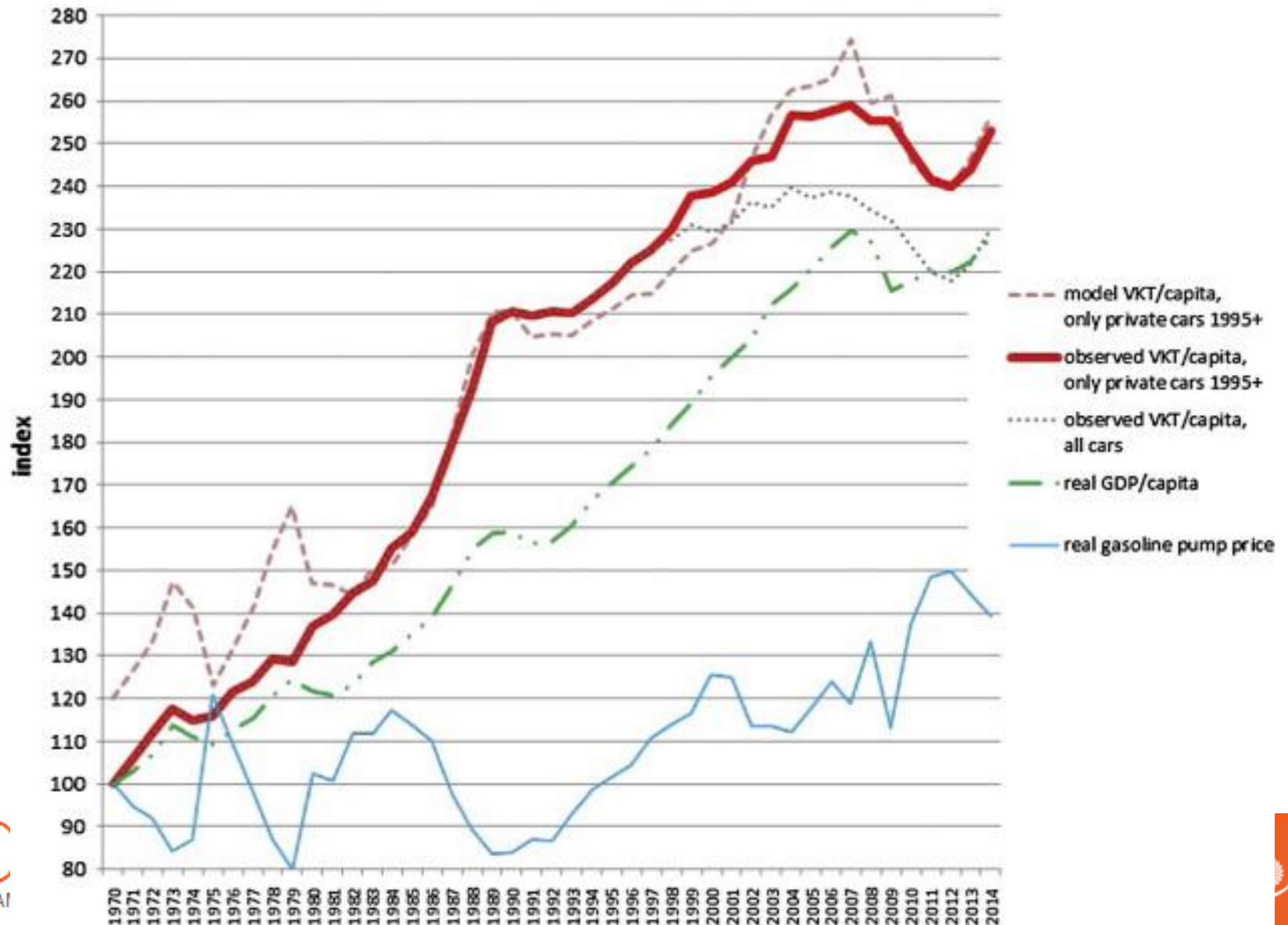
Big Spatial Differences



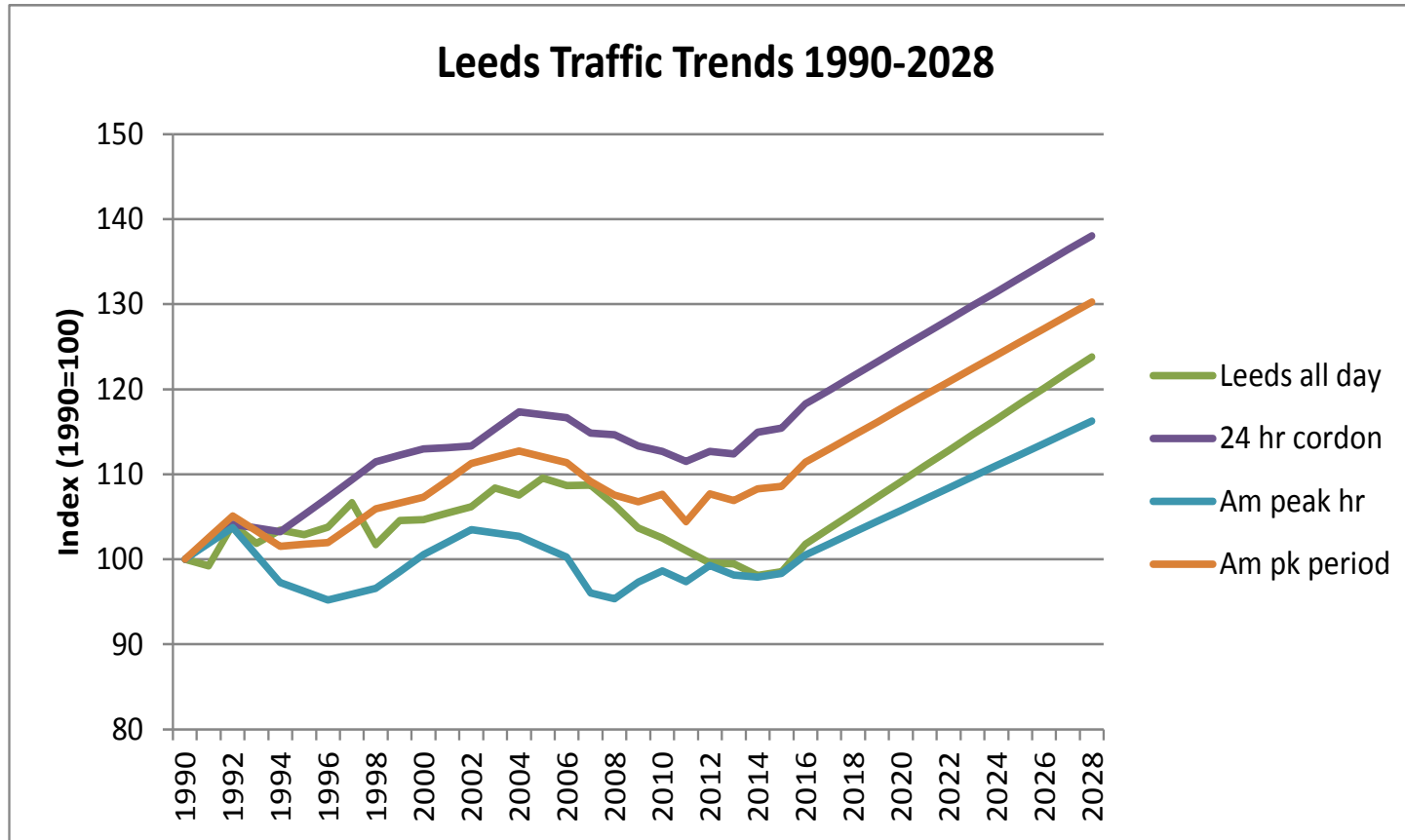
What has been happening?



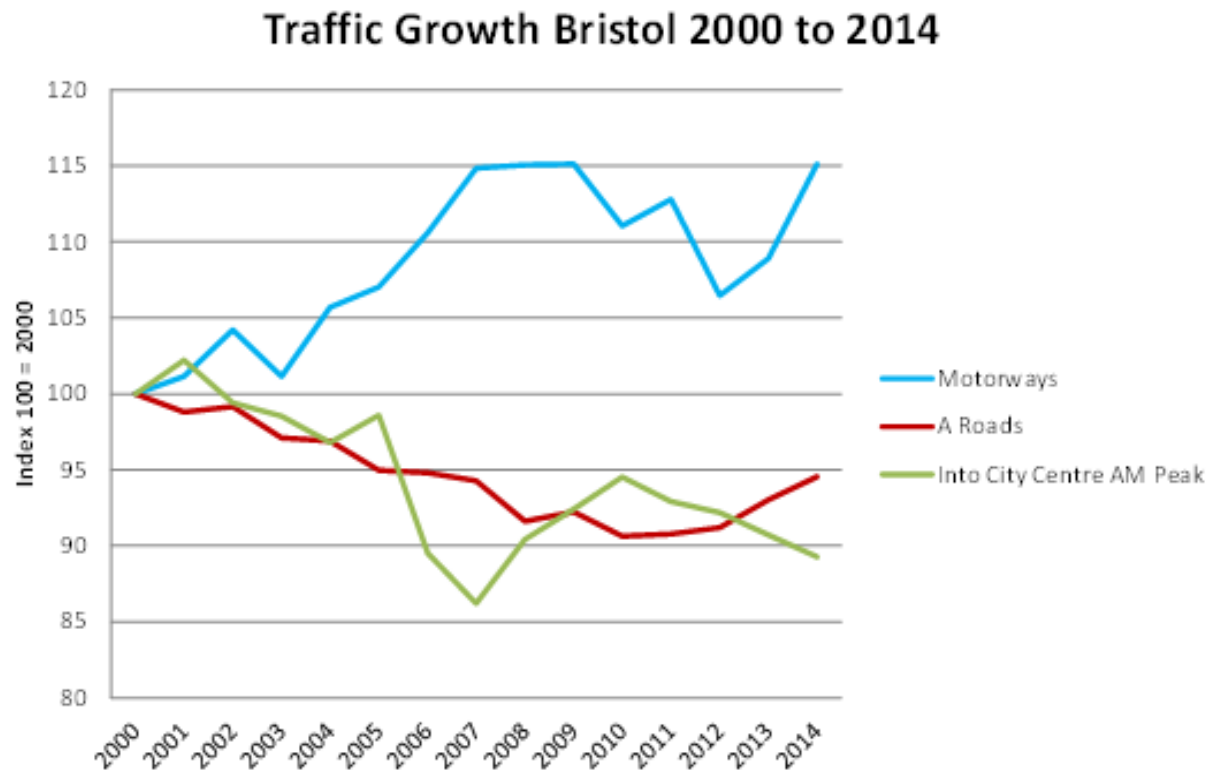
What has been happening?



But projecting business as usual doesn't make sense – at least in urban areas



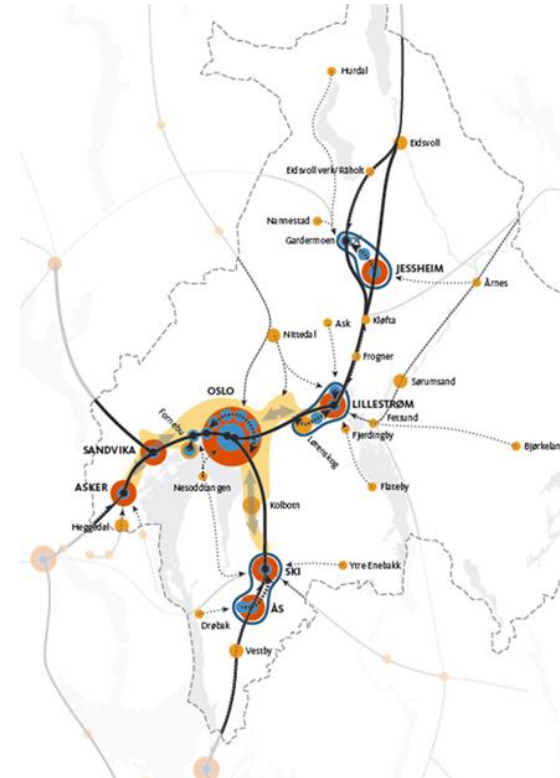
Or at the boundaries?



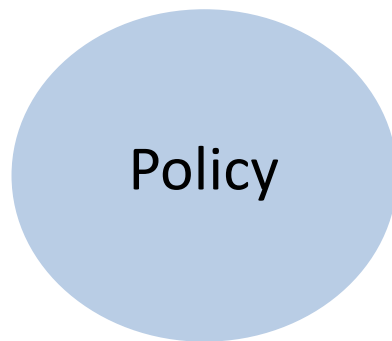
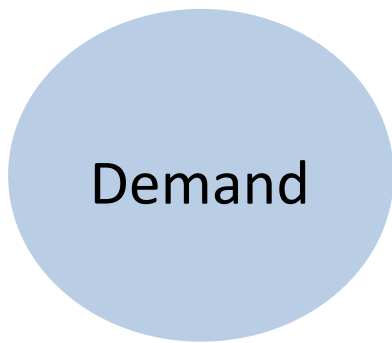
And nor does it lead to the types of places that we might want/need to build



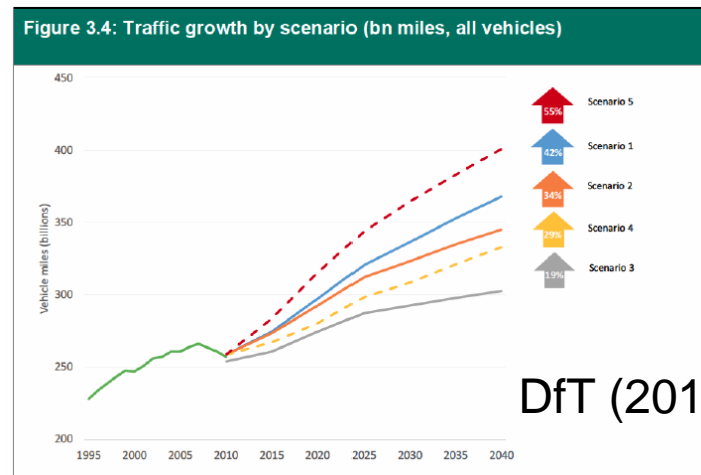
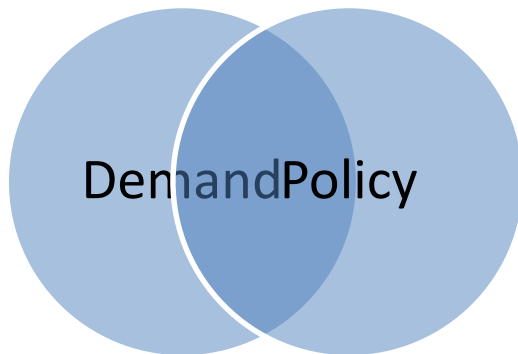
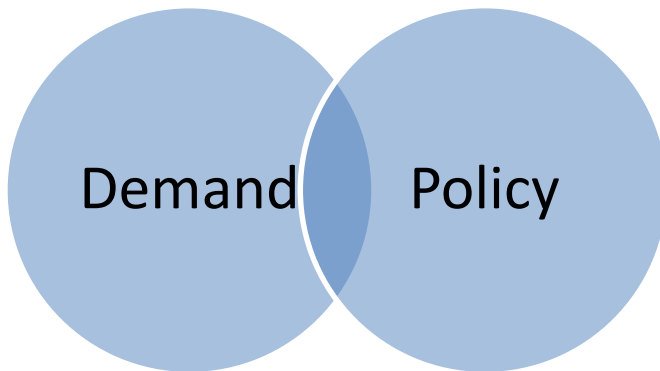
No net impact



No growth in traffic



Agency!



New Mobility Options



Mechanisms	Impacts	Automation level
Distances	XX	
Modal shift	XXX	
Trip number	X	
New user groups	X	
Mobility on demand	X	
Empty running	X	

Smaller impact at low levels of automation

Step change at high levels of automation

But demand will **almost certainly** increase

USA: up to 60% increase in demand, range 5%-60%

Wadud et al. 2016

New Mobility Options

UBER AND MODA LIVING ANNOUNCE PROP TECH PARTNERSHIP TO REDUCE CAR OWNERSHIP IN UK CITIES

POSTED MAY 27, 2017



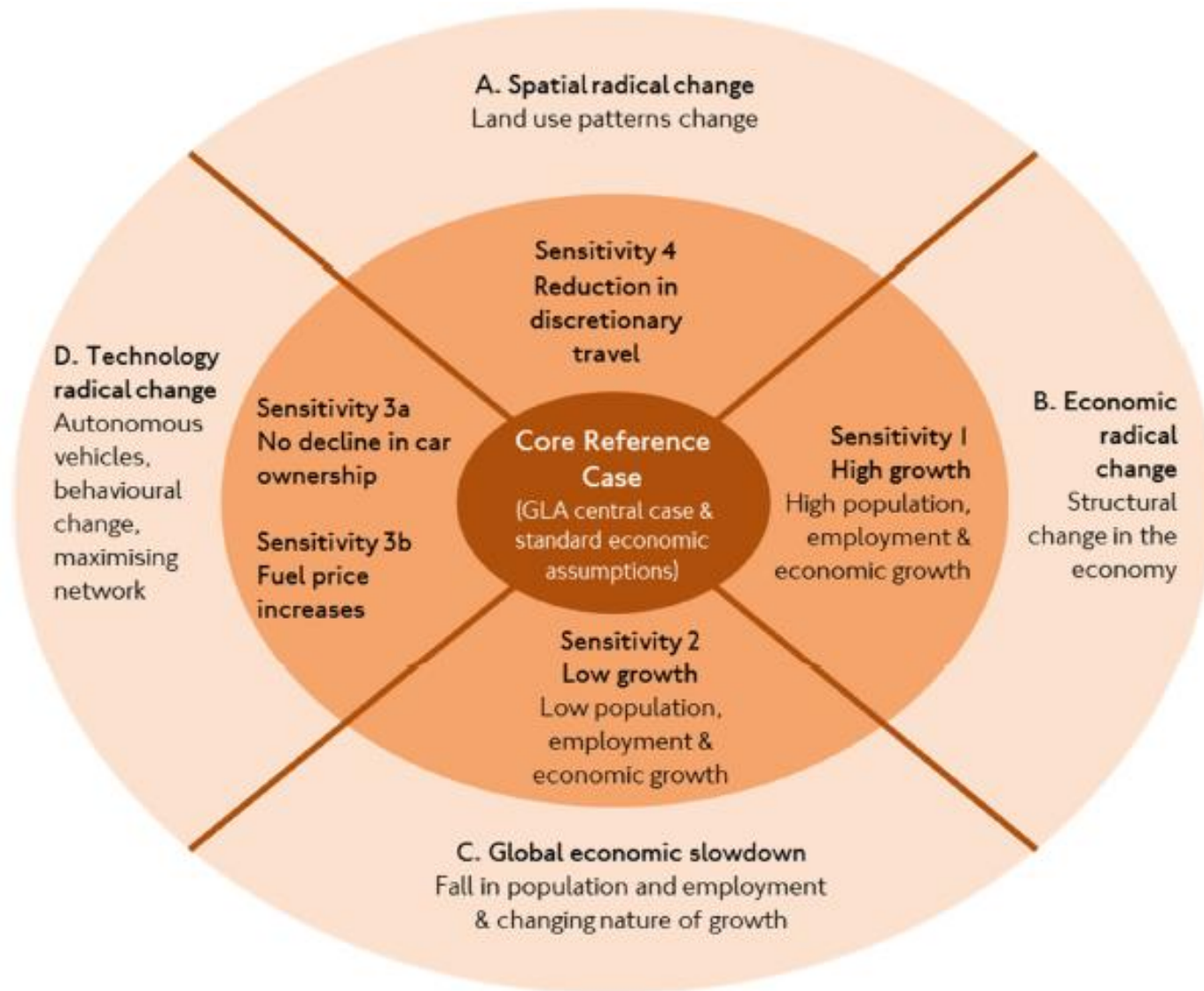
What does this mean for decision-making?

- What kind of futures **should** we plan for?
- At what scale(s) is this best done?
- In what ways does this all challenge Business as Usual?
- Should we adapt our toolkit and if so, how much and for what types of decisions?
- Can we adapt our toolkit? Are we really open to uncertainty?
- What would the consequences of doing nothing be?

Your exam question

Who needs to hear what from
the Commission?





Source: City Planning

Figure 4.2 Range of percentage growth in trips by mode, 2015 to 2041.

