

# **More cars, less sharing, less use – car ownership and usage trends in Germany**


Evening Discussion on the Future of Travel Demand  
London, May 4 2017

Tobias Kuhnimhof



Knowledge for Tomorrow



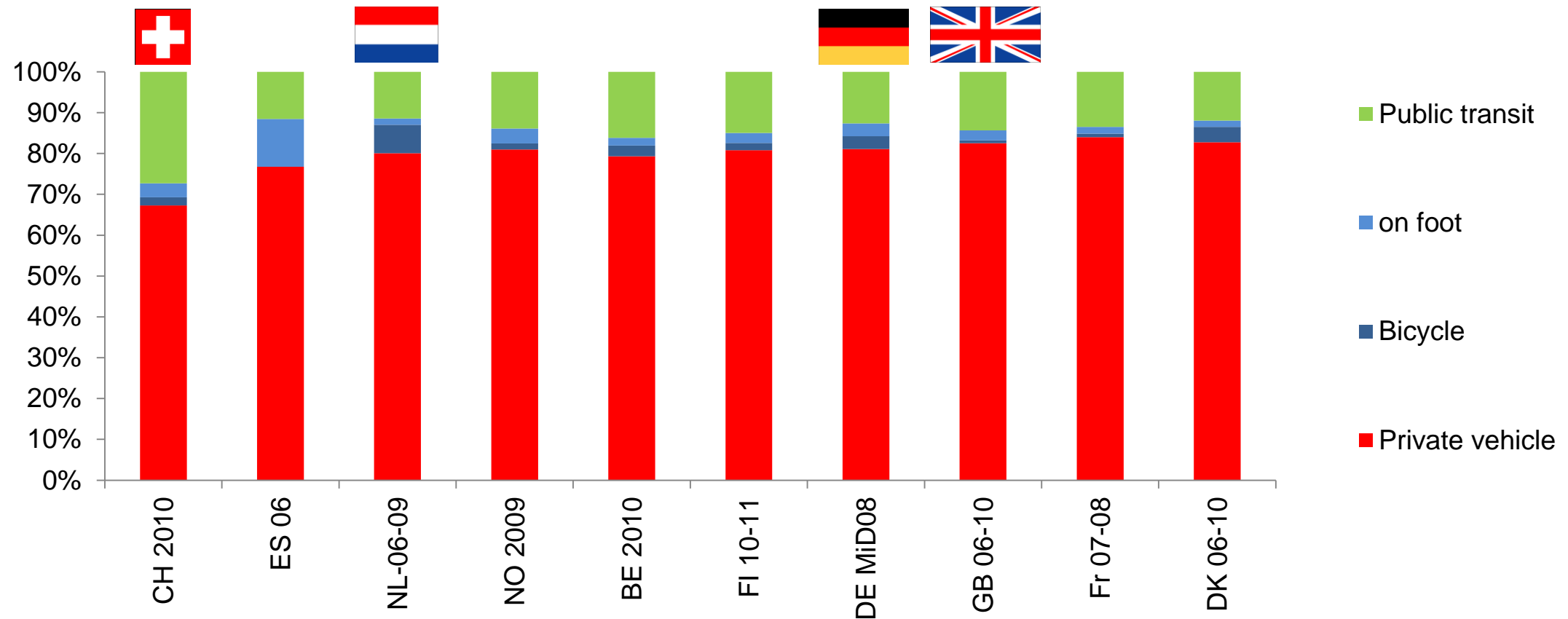
		% of World
Population [million]	81	1%
CO2 emissions [million tons]	845	2%
Motor vehicles on register [million]	54	5%
Motor vehicles production [million]	6	7%

Source: <http://edgar.jrc.ec.europa.eu>, <http://www.kba.de>, <http://www.rita.dot.gov>



# As in other European countries, German mode share is dominated by the car

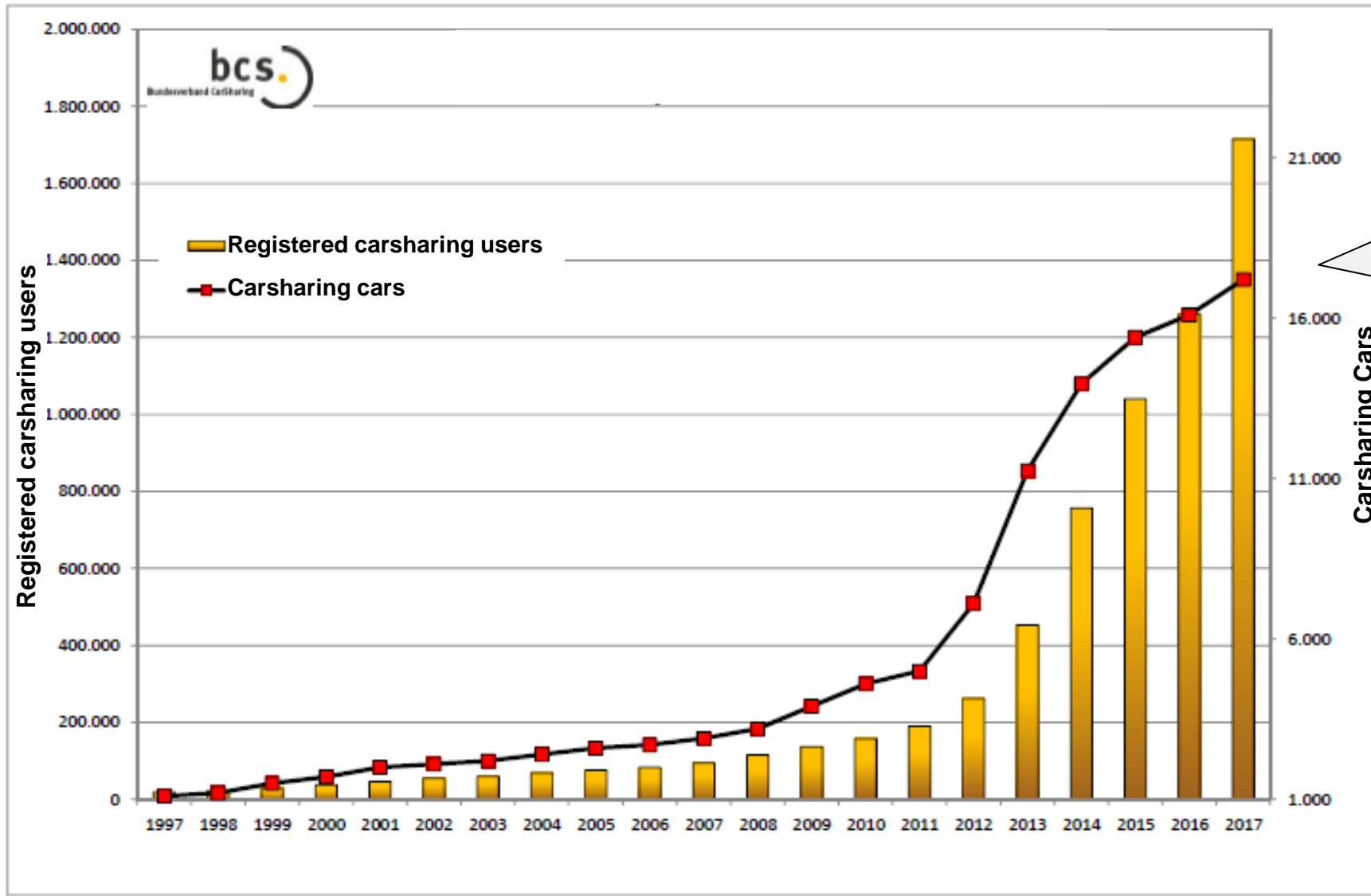
Proportion of distance travelled by mode



Source: COST Action Shanti



# Is car sharing a game changer?

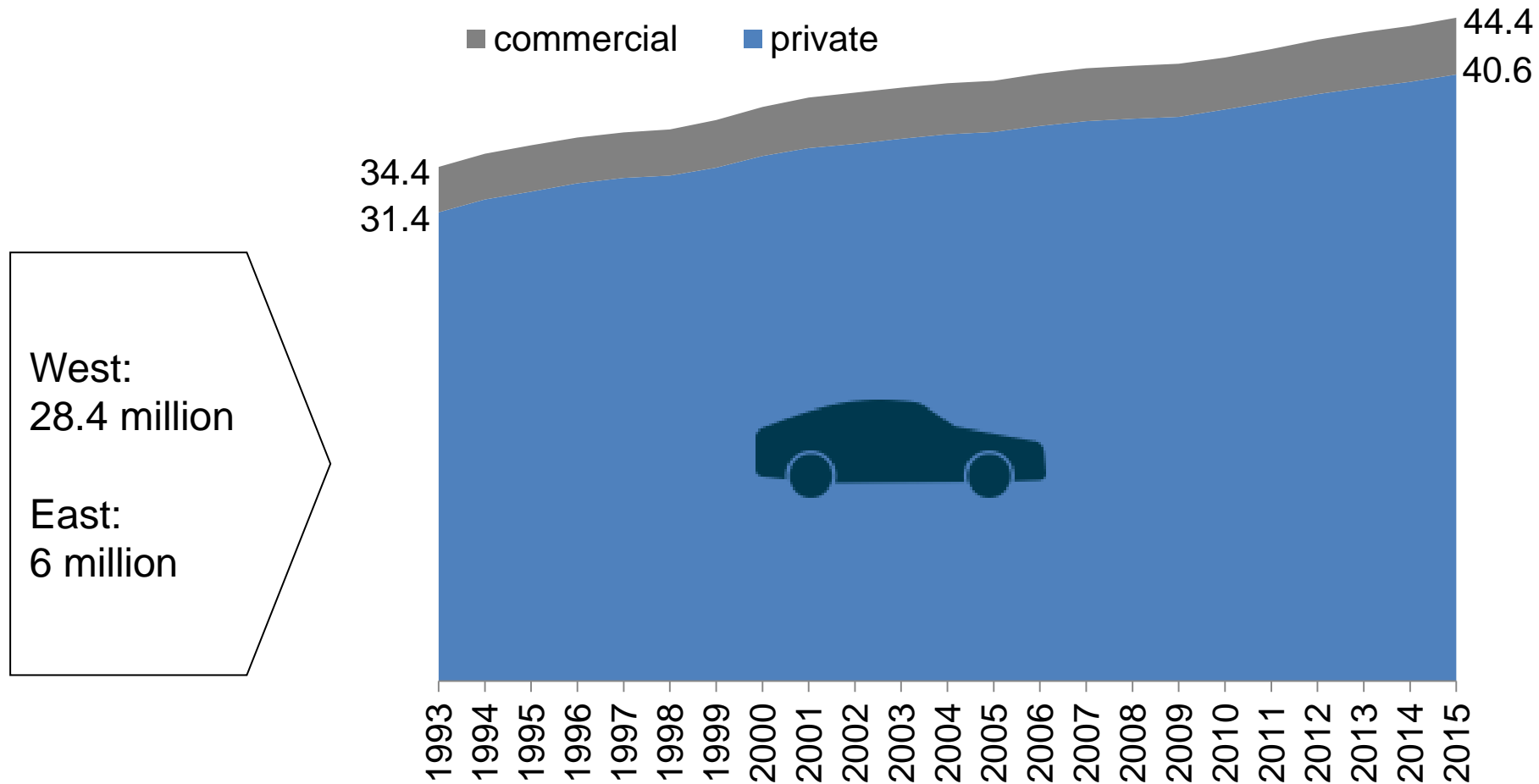


~17.000 cars since 1990s

Source: <https://carsharing.de>



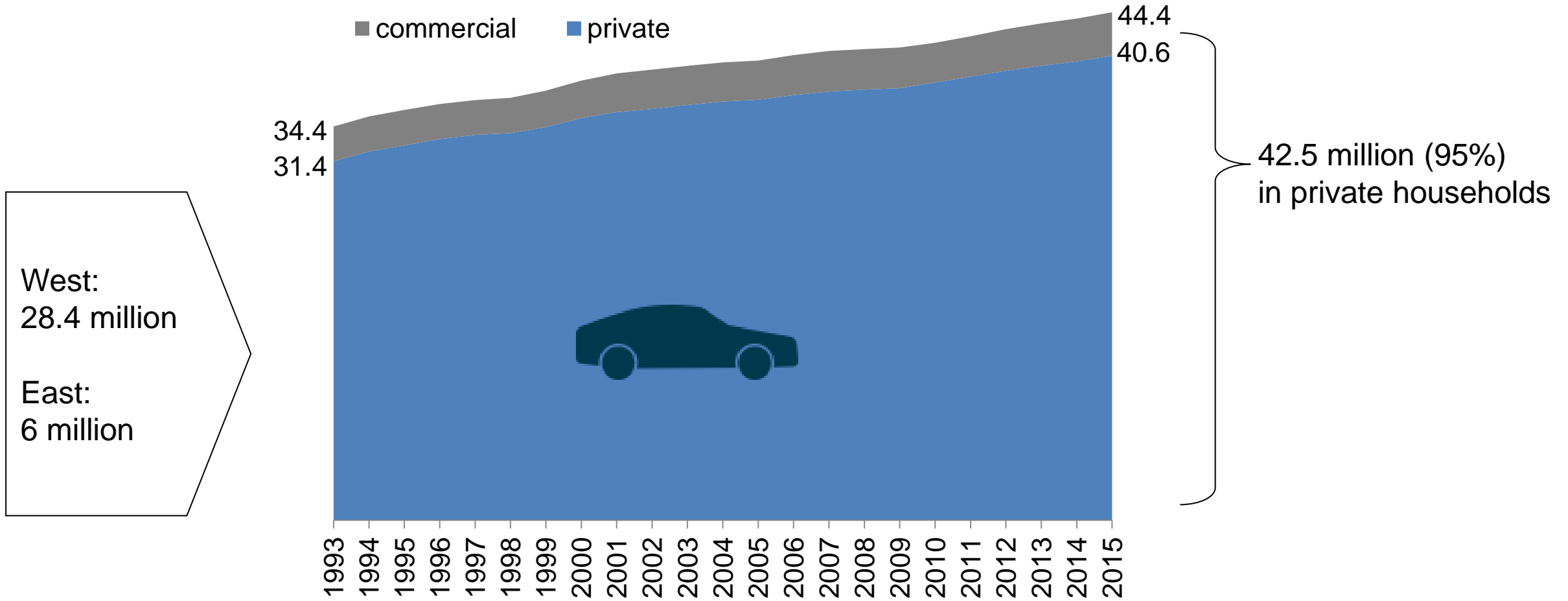
# Since 1990s: 10 million more cars in private households



Source: Kraftfahrbundesamt, <http://www.kba.de>



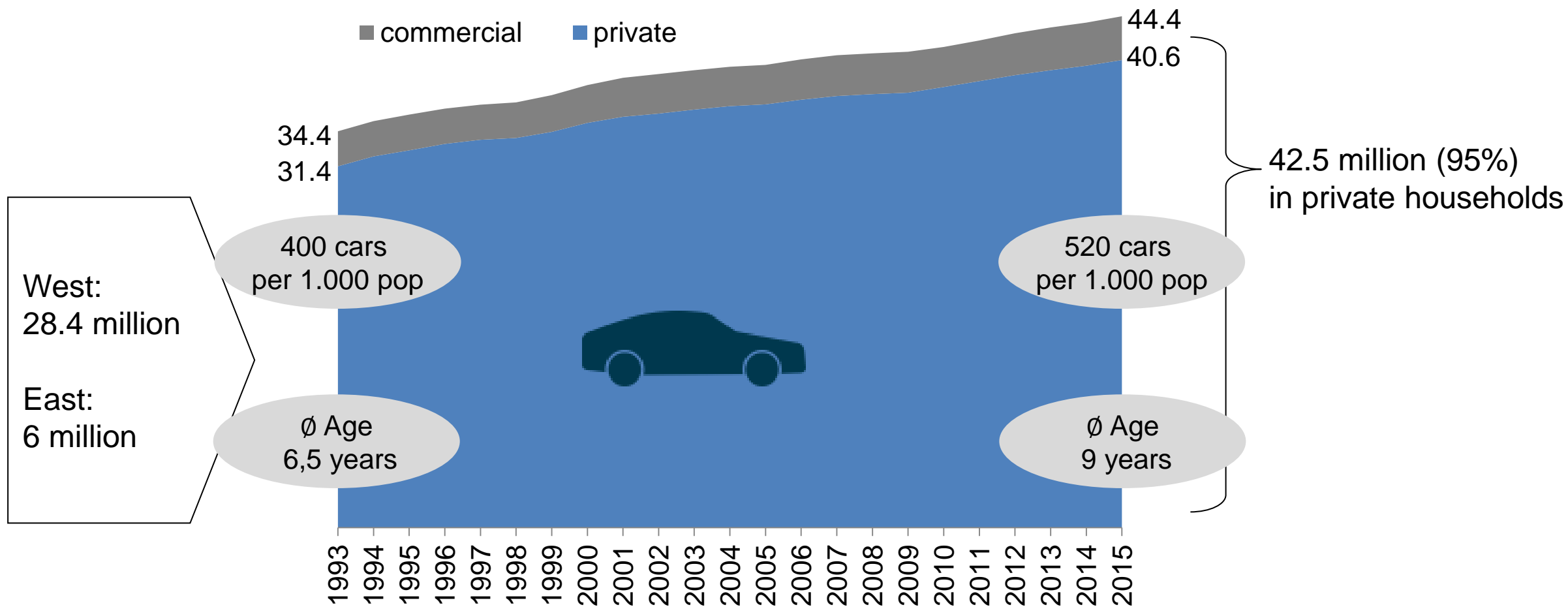
# Since 1990s: 10 million more cars in private households



Source: Kraftfahrtbundesamt, <http://www.kba.de>



# Since 1990s: 10 million more cars in private households



Source: Kraftfahrtbundesamt, <http://www.kba.de>

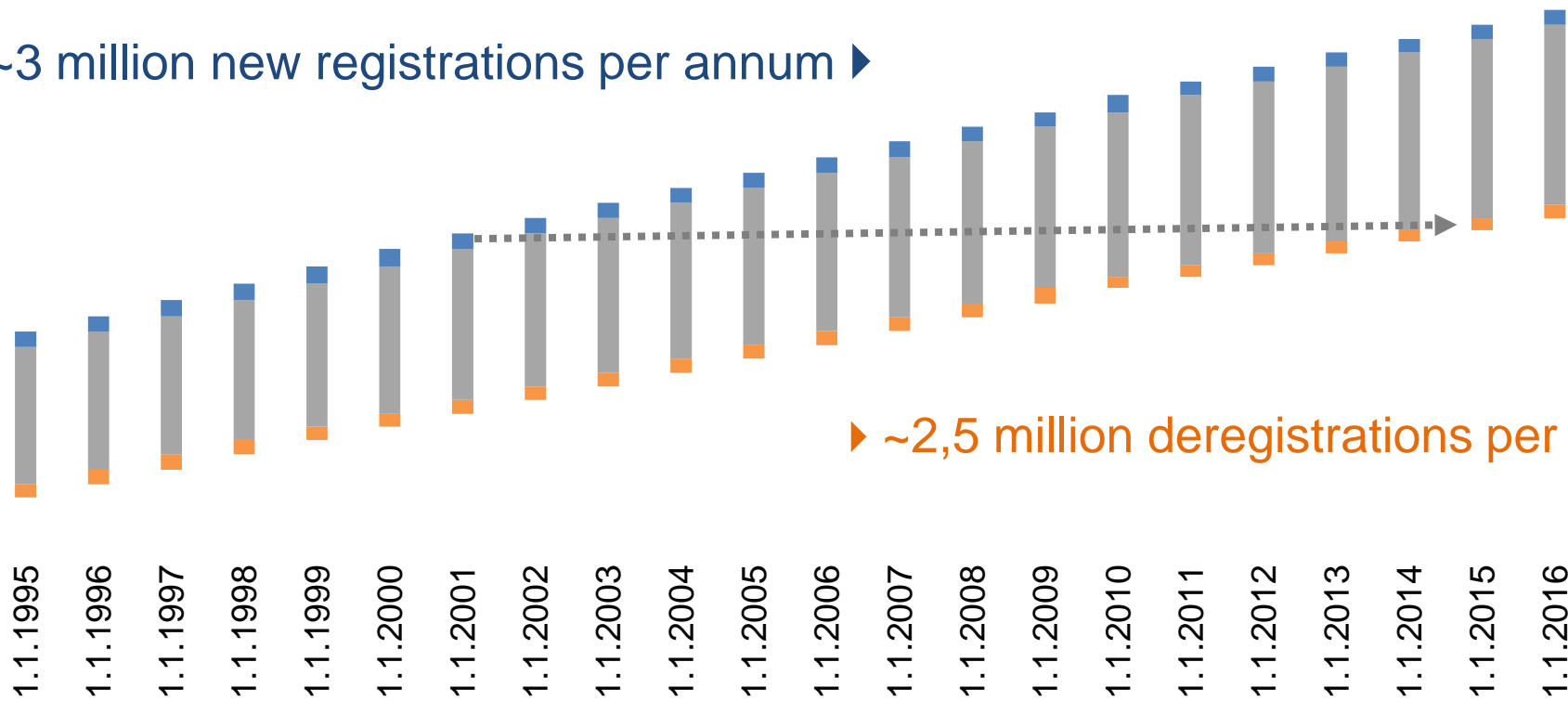


# On average, a car is 15 years on German roads and has almost 4 owners.

~3 million new registrations per annum ▶

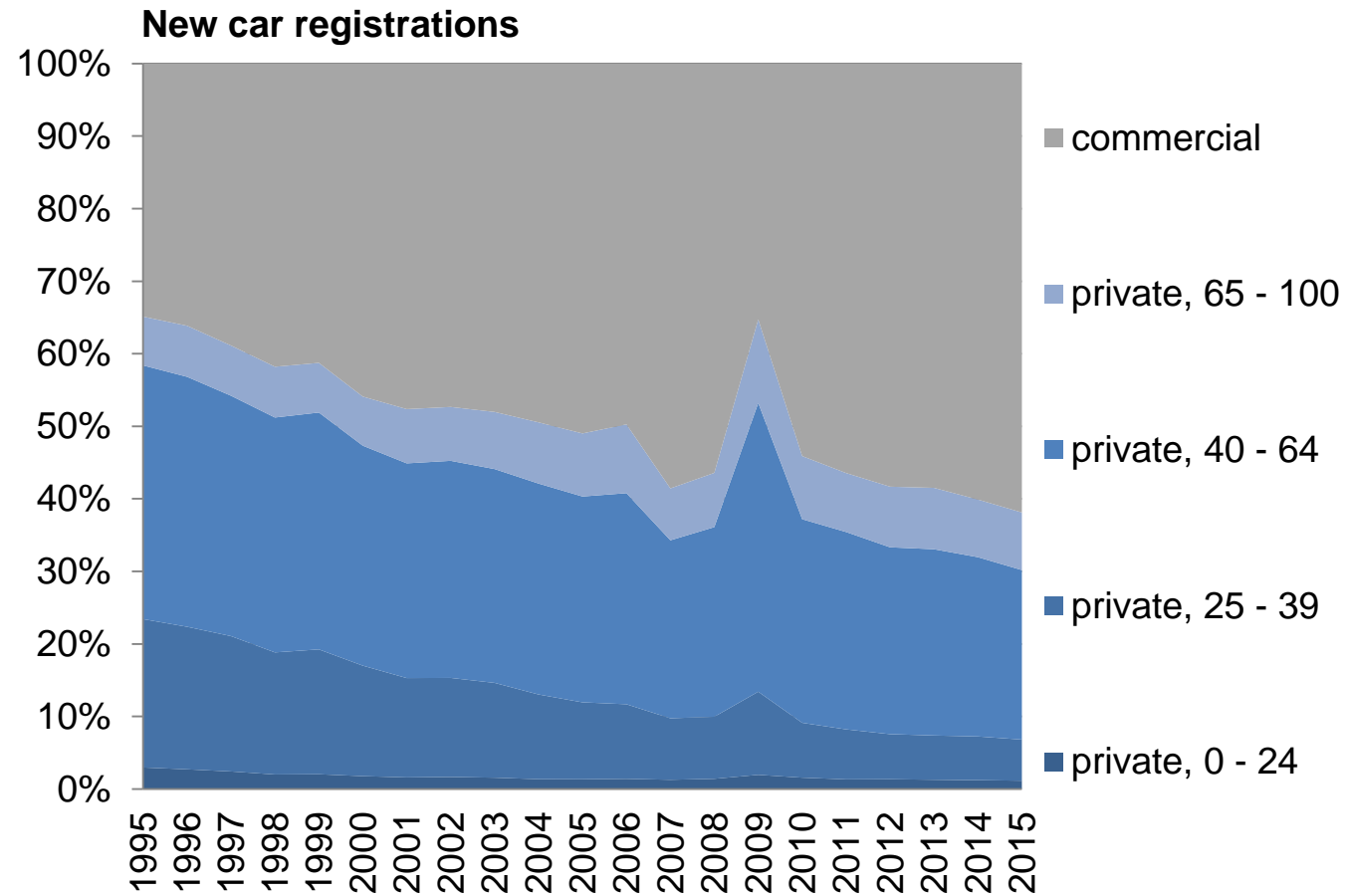
↻ ~7 million owner changes per annum

▶ ~2,5 million deregistrations per annum





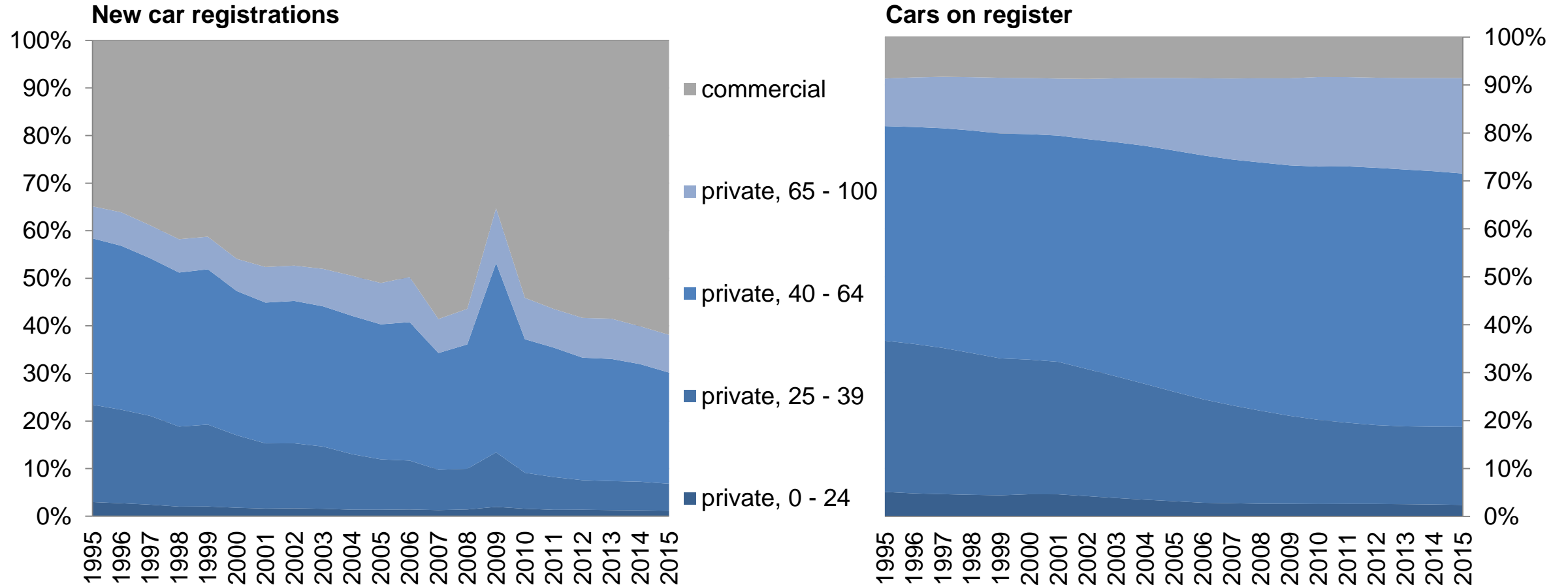
# Substantial growth in commercial registrations



Source: Kraftfahrtbundesamt, <http://www.kba.de>



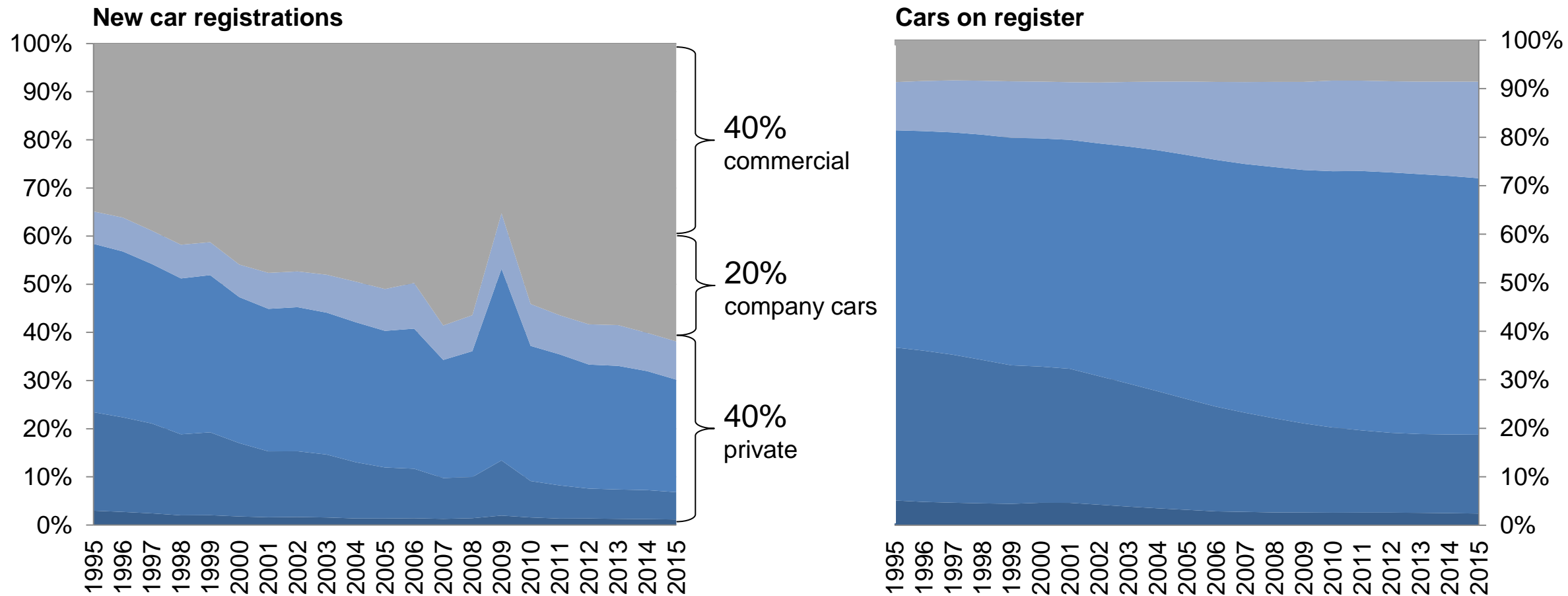
# Substantial growth in commercial registrations ... did not lead to more a higher proportion of commercial cars on register.



Source: Kraftfahrtbundesamt, <http://www.kba.de>



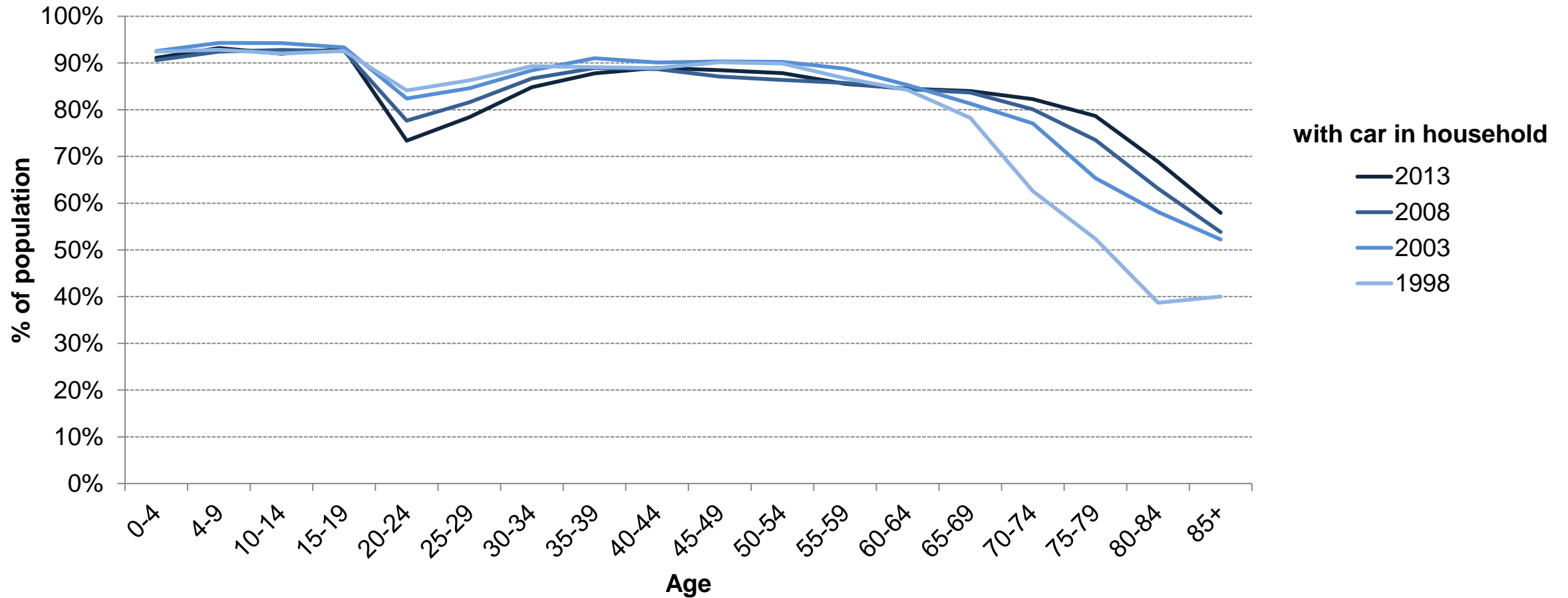
# Substantial growth in commercial registrations ... did not lead to more a higher proportion of commercial cars on register.



Source: Kraftfahrtbundesamt, <http://www.kba.de>

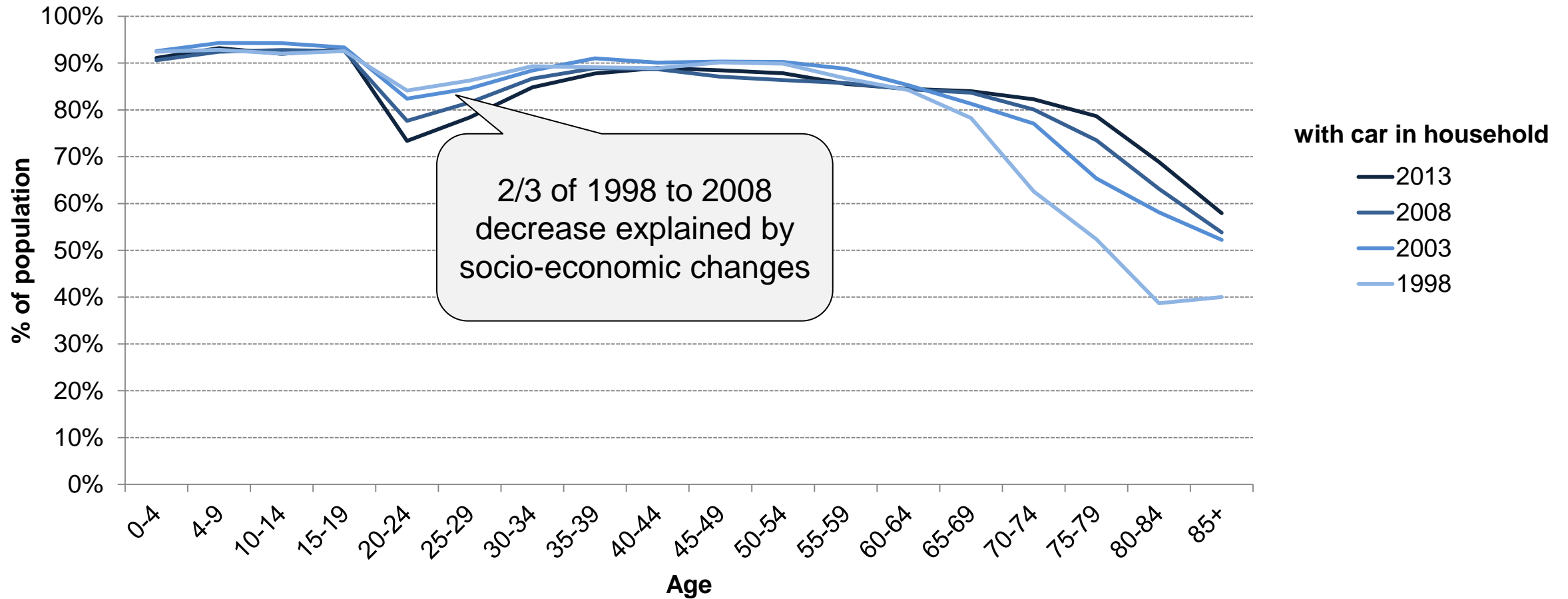


# Diverging trends for proportion of population with car in household by age



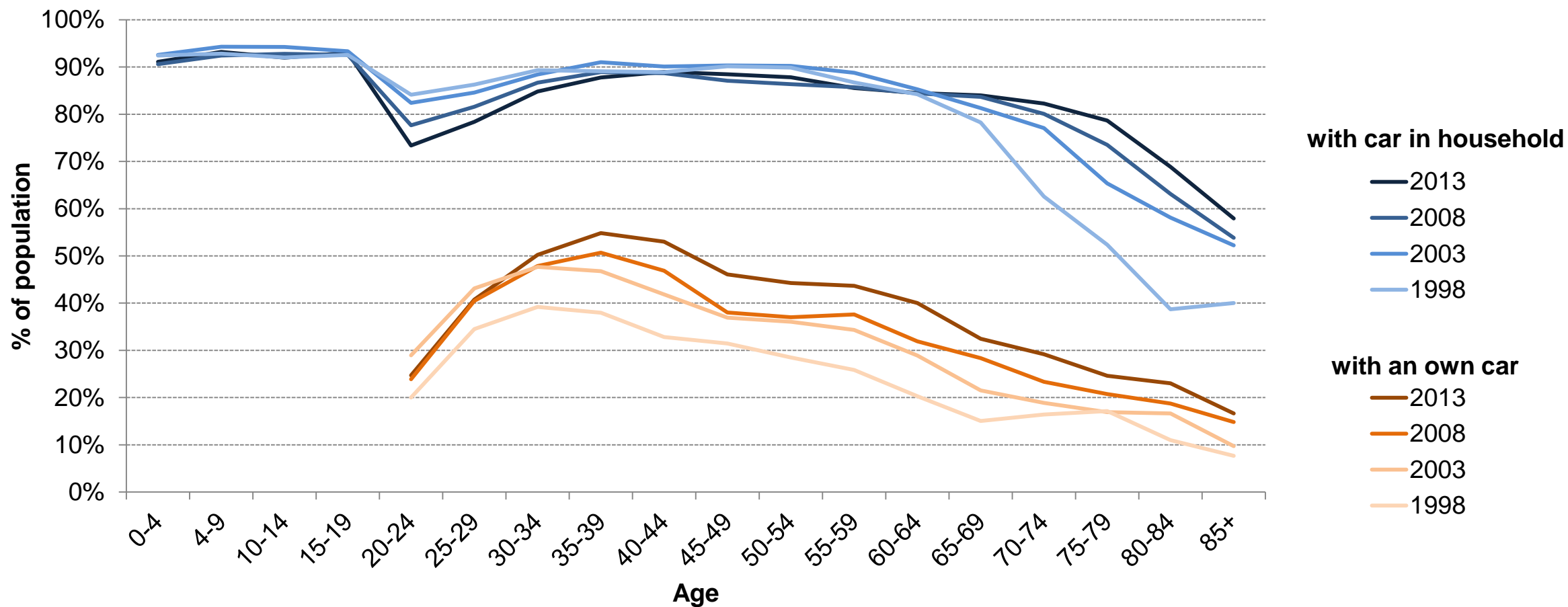
Source: analysis of German Income and expenditure survey

# Diverging trends for proportion of population with car in household by age



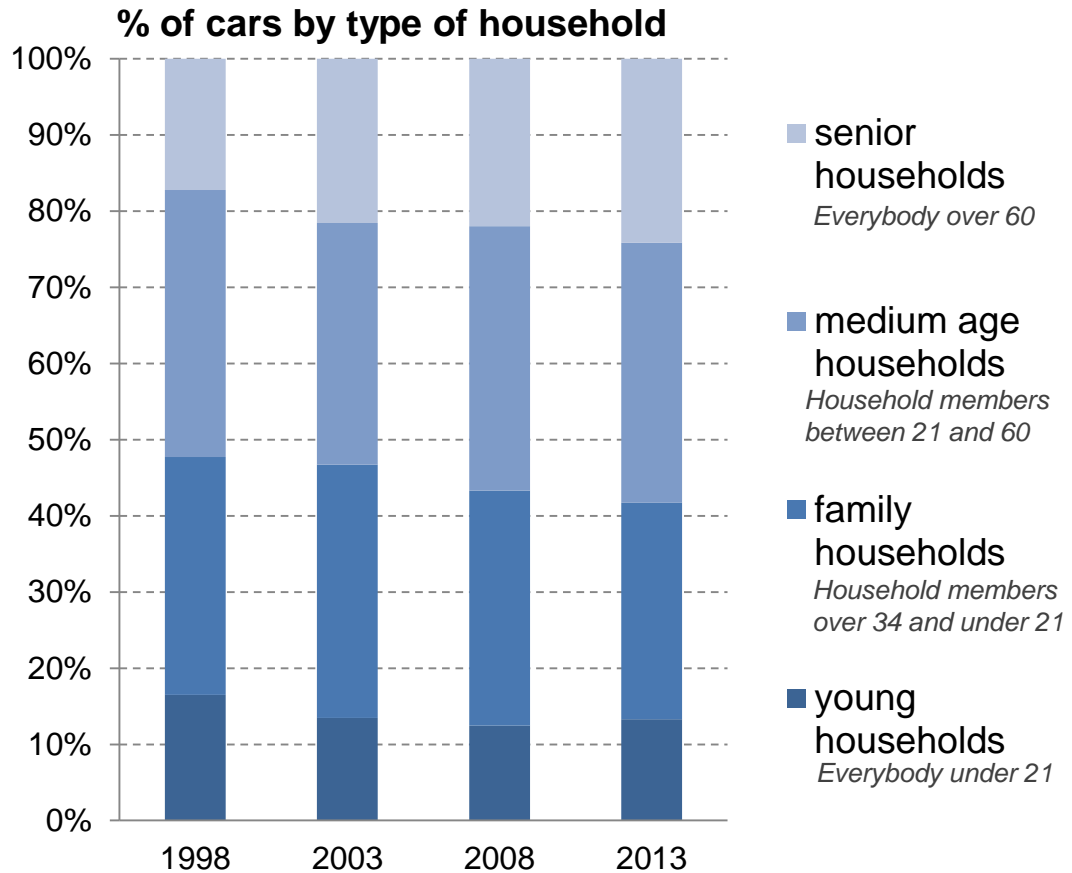
Source: analysis of German Income and expenditure survey

## Across age groups, increase of proportion with an own car ( = a car for each adult in household)



Source: analysis of German Income and expenditure survey

# Shift in the role of cars: *More cars in senior households*

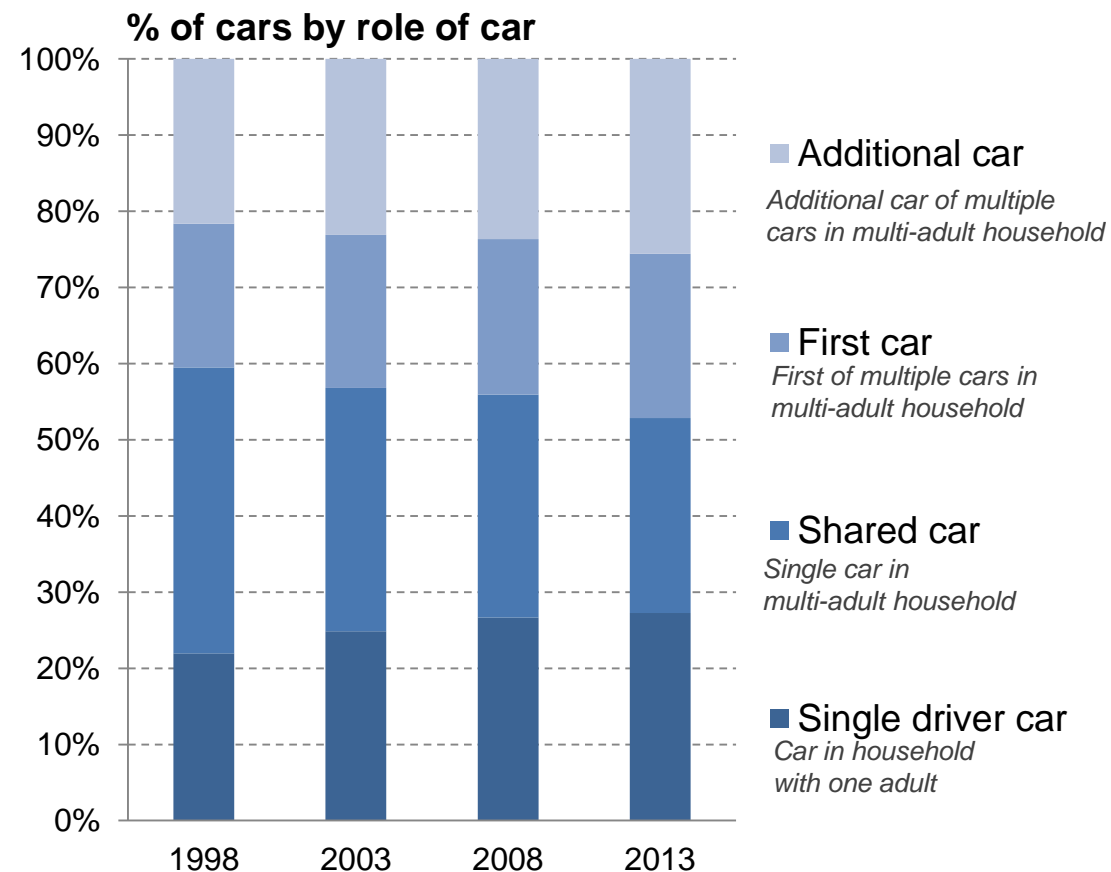
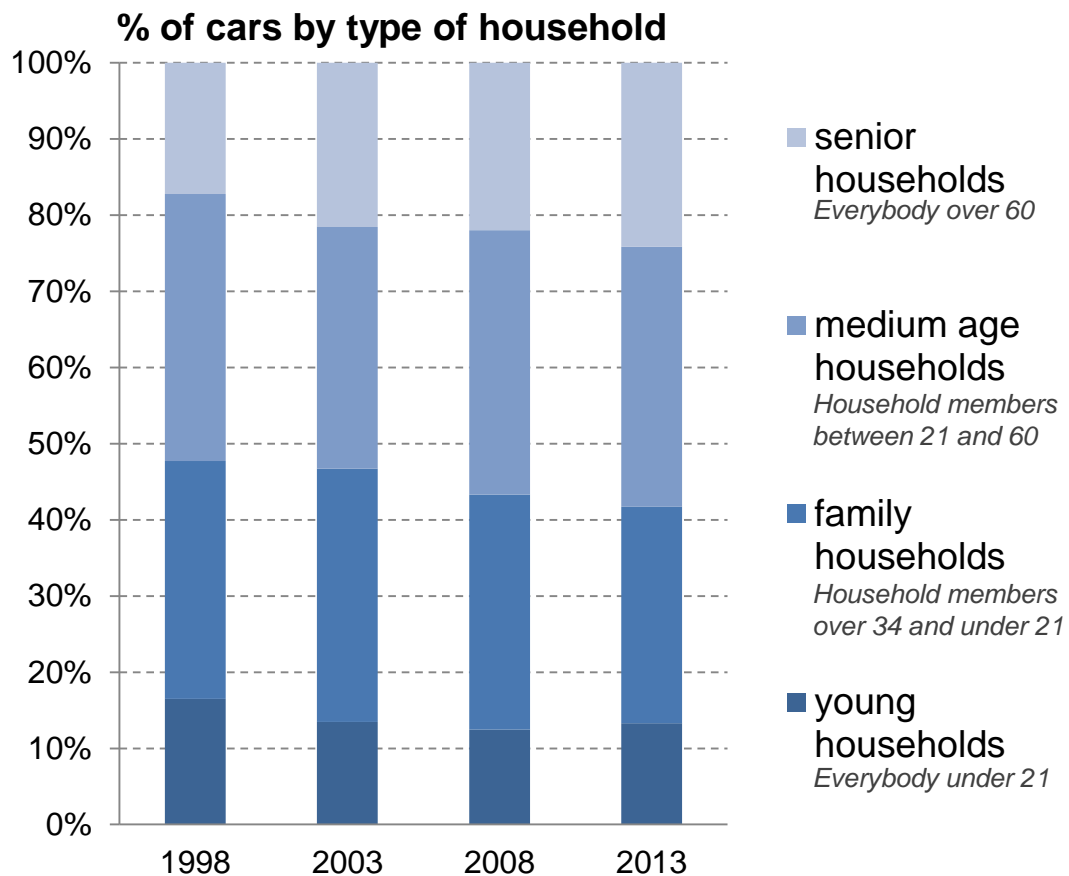


Source: analysis of German Income and expenditure survey



## Shift in the role of cars: *More cars in senior households*

## *Fewer cars shared within households*



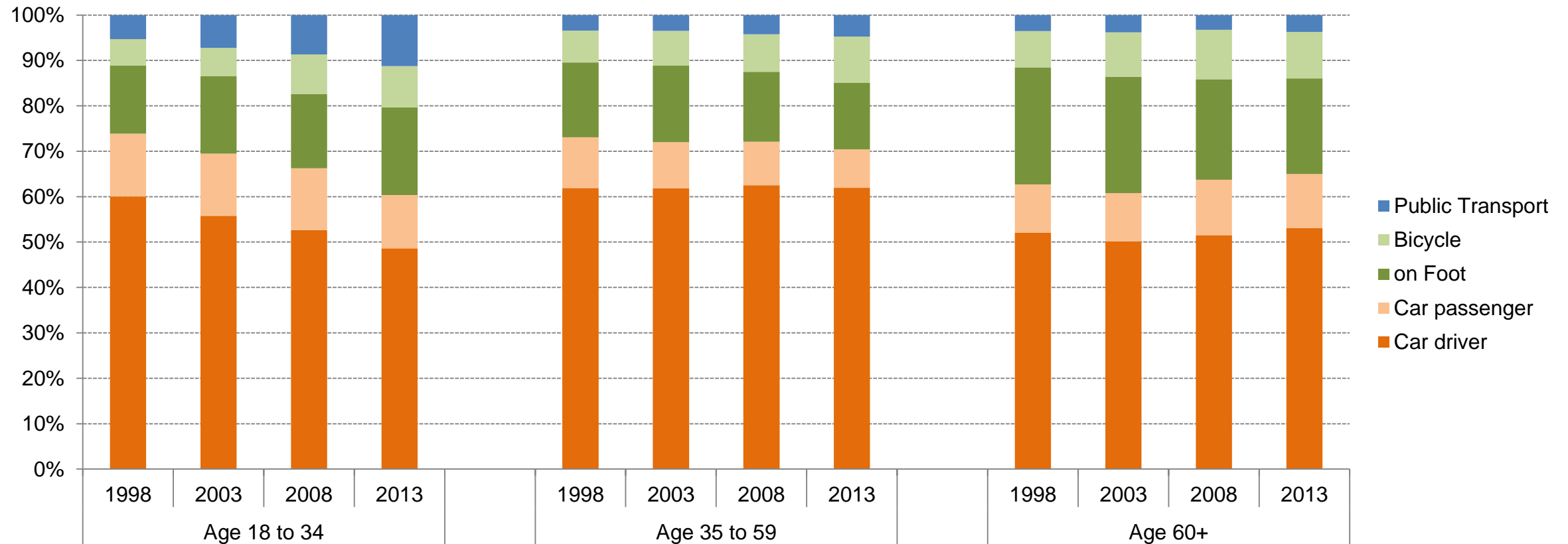
Source: analysis of German Income and expenditure survey





While there's hardly any change of total German modal split since 1990s young drivers use the car less.

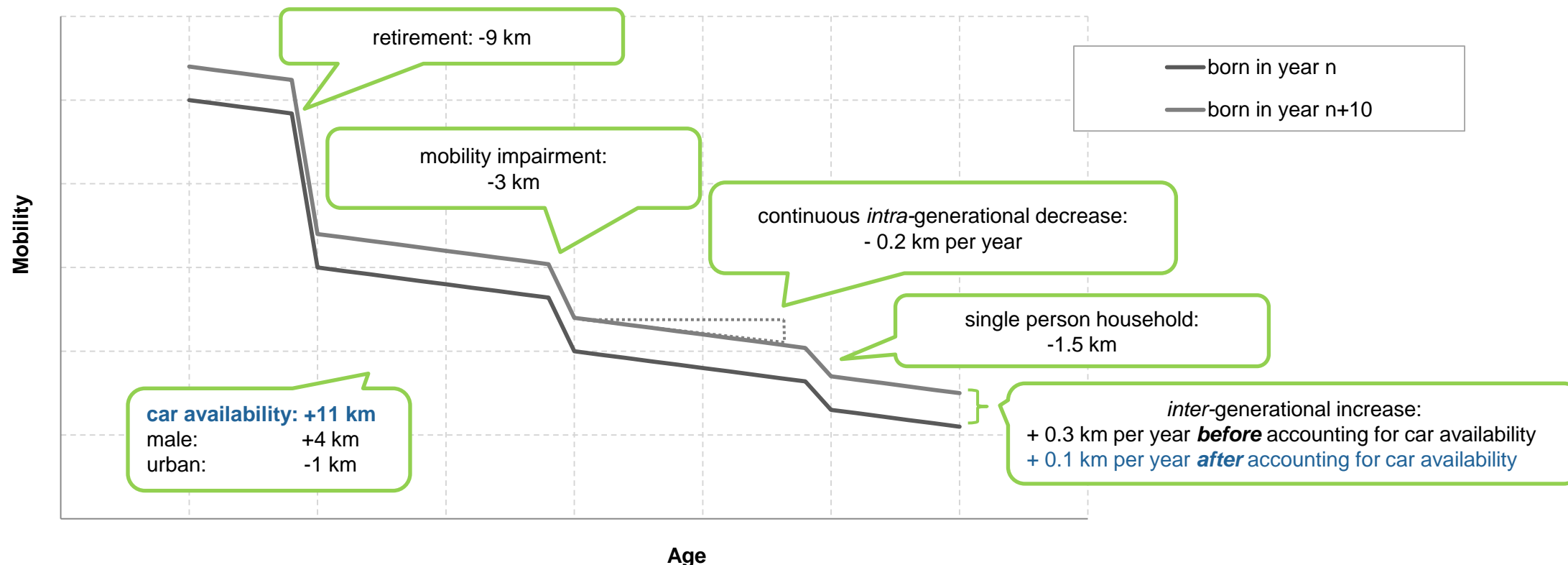
Modal share of travellers with car availability (license + car in household) by age



Source: analysis of German Mobility Panel (MOP)



# Prototypical model of mobility when aging: increase of car availability accounts for 2/3 of growth of km per person per day for seniors 60+

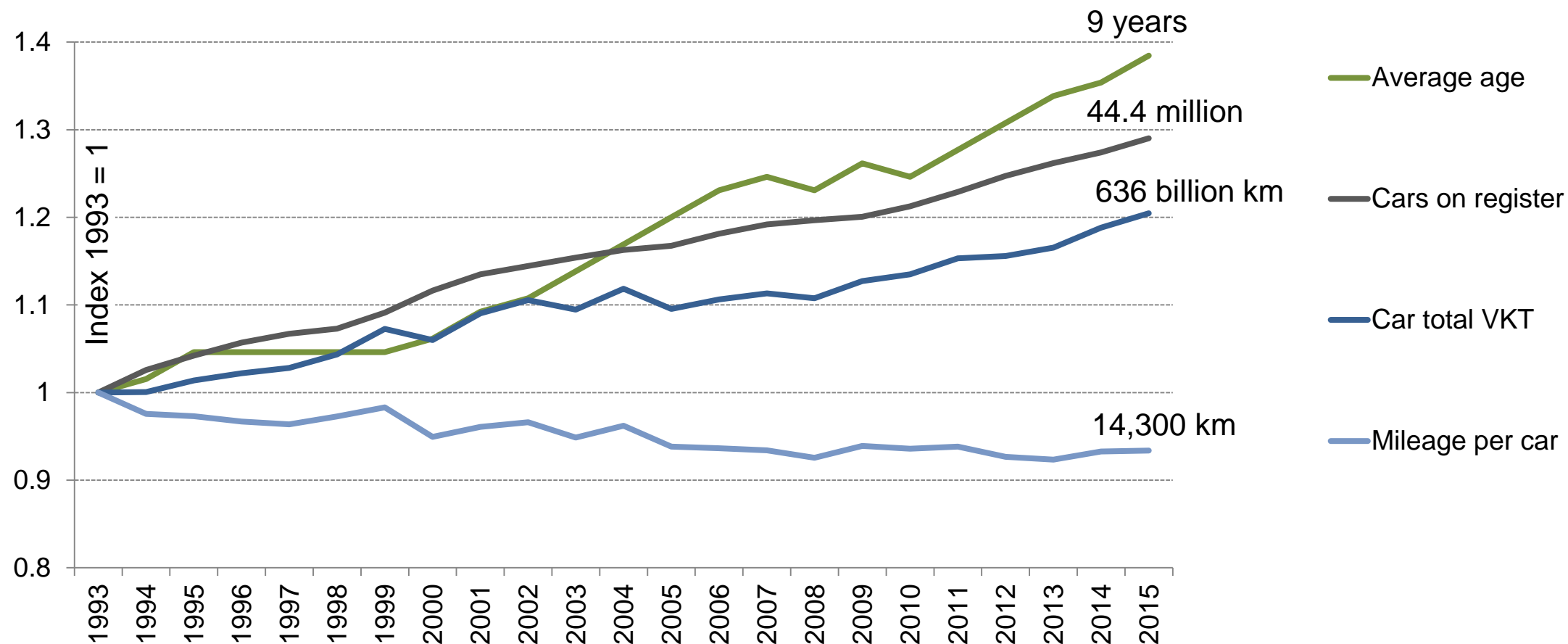


## Summary of automobility trends by age group in Germany

	Children & Teenagers	Young Adults	Medium Age Adults	Seniors
Licensing	-	➔	➔	↗
Car in household	➔	↘	➔	↗
Own car	-	➔	↗	↗
Car use	➔	↘	➔	↗



## Conclusions: more cars, older cars, less mileage per car, more total VKT



Source: <http://www.kba.de>, Verkehr in Zahlen (German Transport in Figures)