



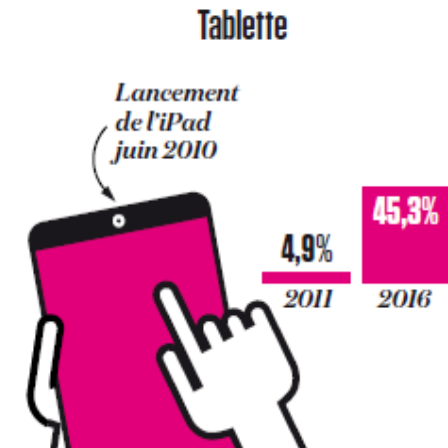
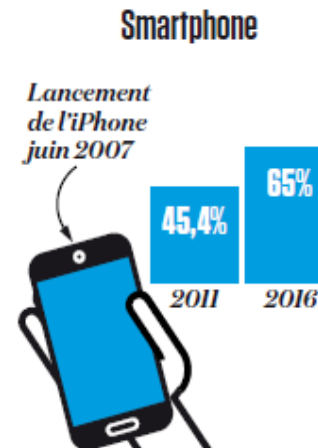
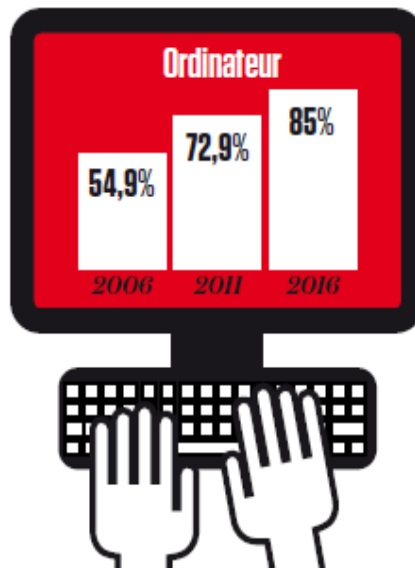
CONNECTING THE HOME – *Transformation and blurring of French domestic living spaces*

Insights from
Sylvie Douzou, EDF-R&D
Véronique Beillan, EDF-R&D



Source : Médiamétrie 2017

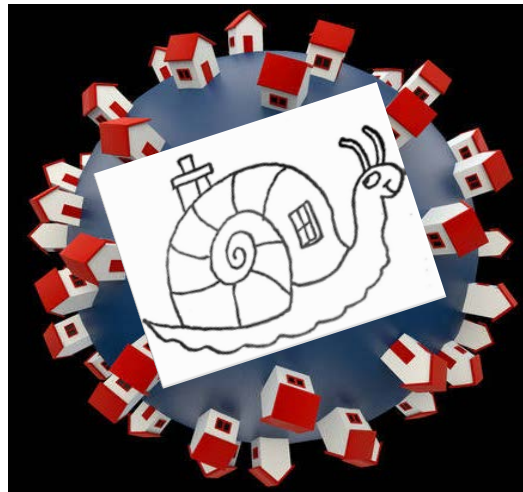
Sylvie Douzou
DEMAND / EDF R&D
EDF Lab Paris-Saclay
11th May, 2017



Source : Médiamétrie 2017

HOME IS ...

... A SHARED
SOCIAL LIVING
SPACE

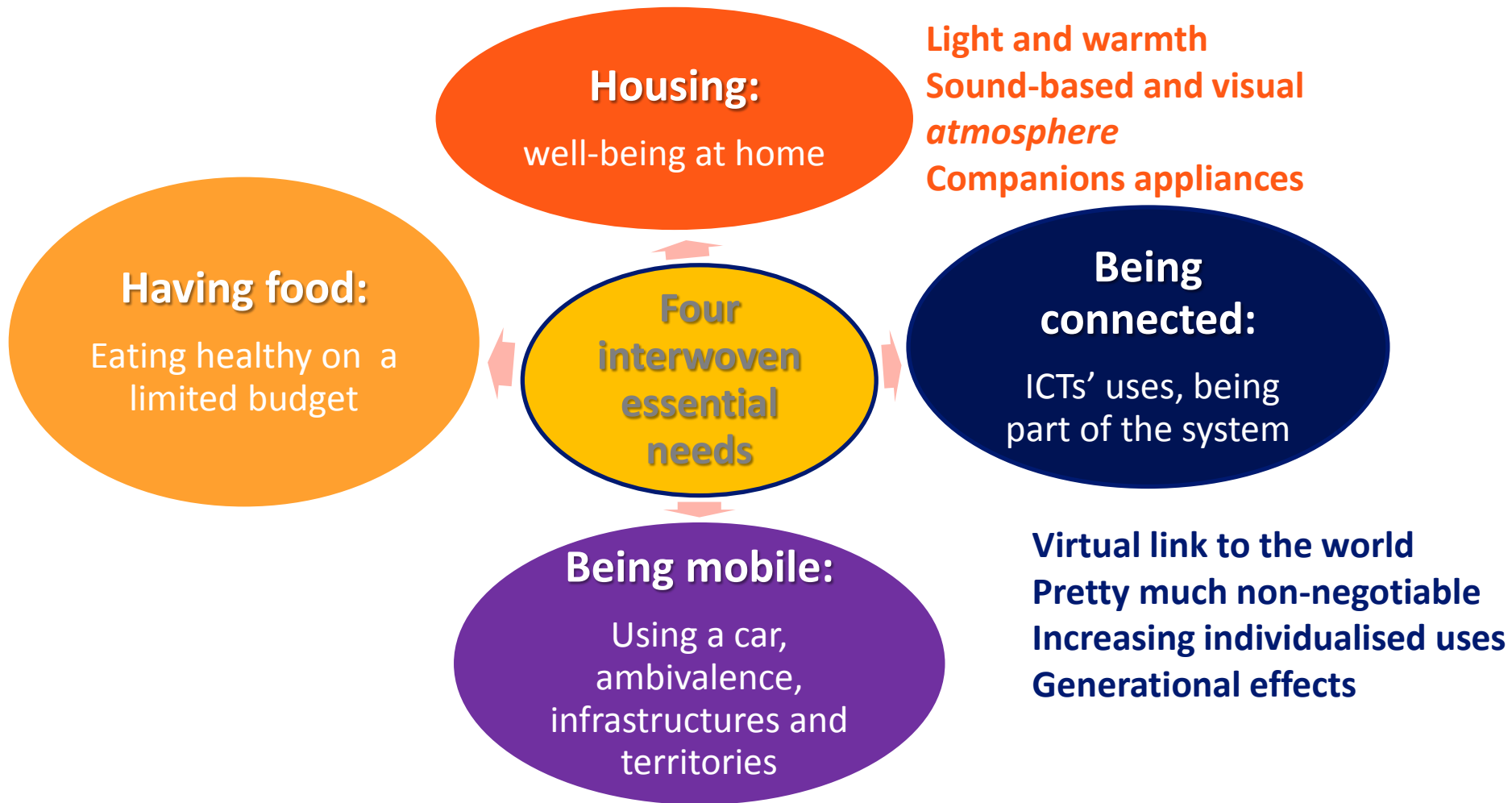


... A COMPLEX
SOCIO-
TECHNICAL
SYSTEM

... A *PLACE* INCORPORATING SOCIAL DYNAMICS
AND SOCIETAL TRENDS

ESSENTIAL DAILY ENERGY NEEDS

(AS EXPRESSED BY HOUSEHOLDS UNDER CONSTRAINTS)



Secondary analysis of a French study focused on the way(s) people live, their daily practices, underlying representations and logics of action (ANR ENERGYHAB)

21 Households interviewed (face-to-face), lower-income middle class from various parts of IdEF

Source: Douzou, Fodor, Beillan (2016) **Basic needs in the dynamics of Demand - Exploring media discourses, households practices and related rationales.** Paper prepared for DEMAND Centre Conference, Lancaster, 13-15 April 2016

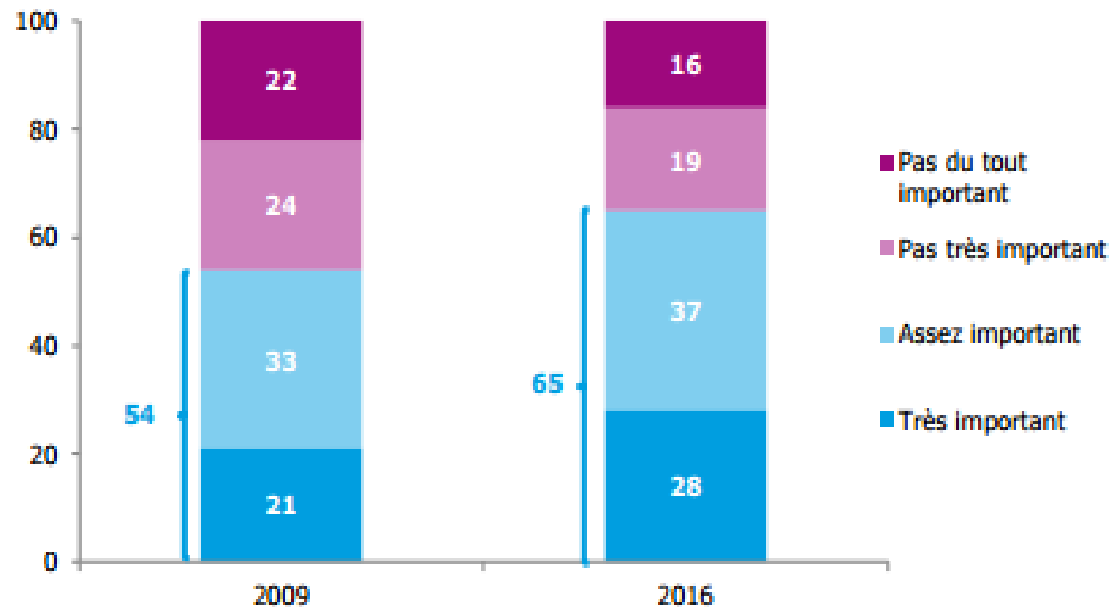
TRENDS FOR THE FRENCH POPULATION (2016)

(1/3)

INTERNET : A tool to be part of the system

Graphique 7 - Selon vous, avoir accès à internet est-il important pour se sentir intégré dans notre société ?

- Champ : ensemble de la population de 12 ans et plus, en % -



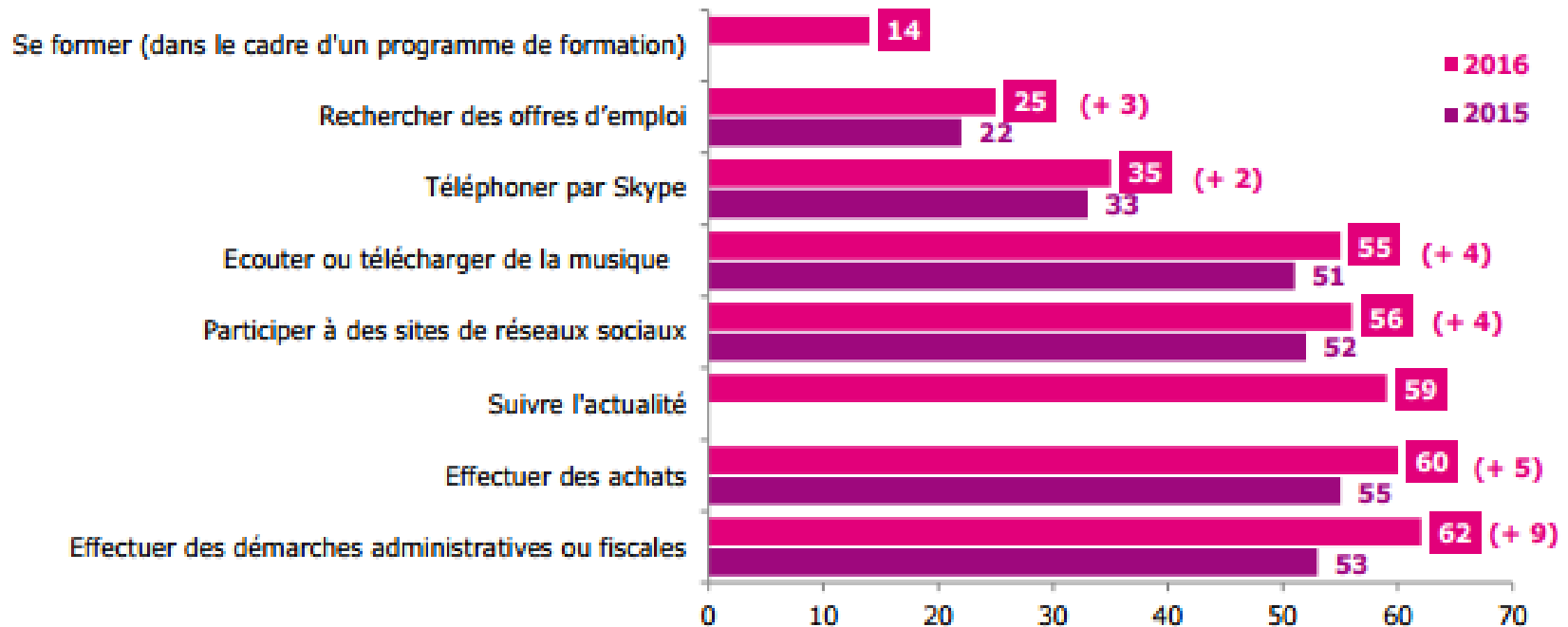
Source : CREDOC, Enquêtes sur les « Conditions de vie et les Aspirations ».

TRENDS FOR THE FRENCH POPULATION (2016)

(3/3)

INTERNET domestic uses: What for?

- Champ : ensemble de la population de 12 ans et plus, en % -



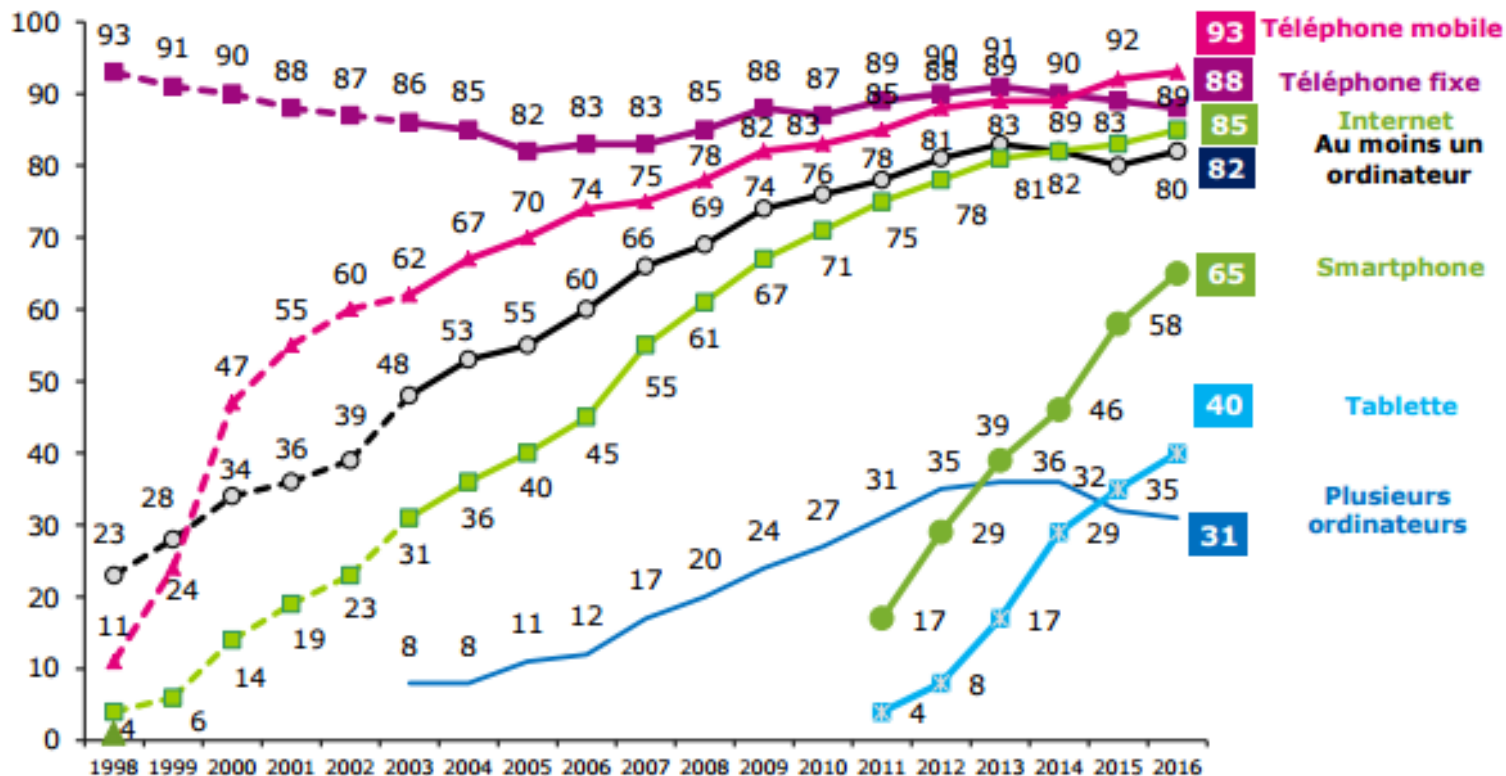
Source : CREDOC, Enquêtes sur les « Conditions de vie et les Aspirations ».

TRENDS FOR THE FRENCH POPULATION (2016)

(3/3)

Equipment rate : Telephony, computer, Home Internet access

- Champ : population de 12 ans et plus, en % -



Source : CREDOC, enquêtes «Conditions de vie et Aspirations » (vague de juin de chaque année).

Note : avant 2003 (en pointillés), les résultats portent sur les 18 ans et plus. A partir de 2003, les résultats portent sur les 12 ans et plus.

ICTs related dynamics of change

ICTs generalisation supports and is encouraged by two co-existing, interwoven, tangled and ongoing movements

-1-

A RENEWED MULTI-FUNCTIONALITY IN FLEXIBLE SPACES

Versatility in the use of a single space and the blurring of conventional socio-spatial and socio-temporal boundaries



-2-

THE INDIVIDUALISATION OF ACTIVITIES WITHIN THESE SPACES

Individuals preserve their own personal spaces while maintaining some selective collective times at home

Shifting temporalities of home living, blurring feature between what relates to private and public spheres, flexibility of intra-domestic spaces, interpenetration of open and closed spaces, of inside and outside

Secondary analysis of a French study focused on the way(s) people live, their daily practices, underlying representations and logics of action (ANR ENERGYHAB)



59 Households interviewed representative from various parts of the Greater Paris region

Dynamics of change - implications for Energy Demand

De-synchronized and spatio-temporal context-free activities served by ubiquitous access to services and 'nomadic' tools

- An ever increasing quest for time-saving
- Greater porosity between locations where daily practices are performed and that have hitherto been distinct.

Significant *implications for patterns of domestic energy demand*

- Which aggregated scales?
- Peak demand transformations ?
- More local profiles of energy service access and discourses?

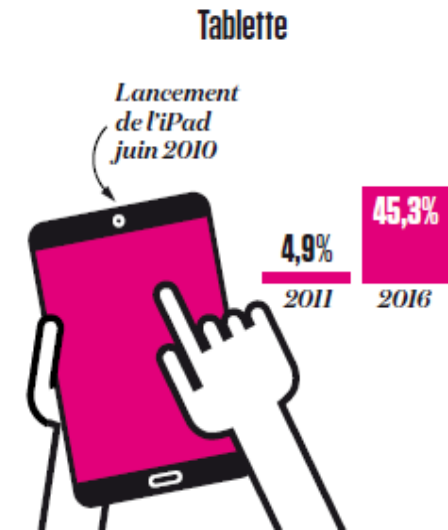
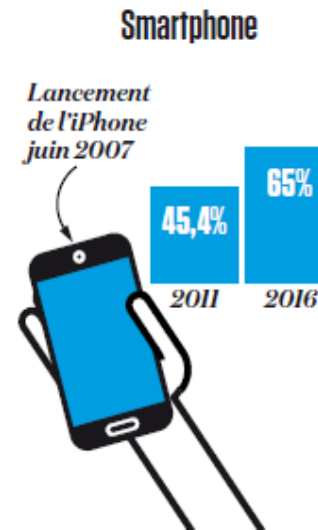
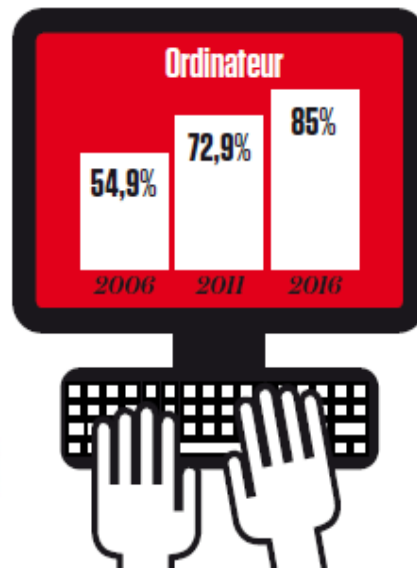
Such complexity requires renewed units of analysis that would better capture the daily continuum of change as well as emergent future patterns

THANK-YOU!

MERCI !



Source : Médiamétrie 2017



TEMPORALITIES AND THE MULTI-FUNCTIONALITY OF DOMESTIC SPACES

French domestic spaces do not fit anymore into how they were dominantly represented from 18th to mid-20th century (Bourgeoisie):

Mono-functionality as a norm: A clearly defined geographical space and the articulation of a set of distinct, fixed and well-defined rooms, and indoor/outdoors boundaries

A shift since the later 1970' echoing social dynamics echoing social and socio-demo evolutions

For instance: opening the Kitchen onto the living room, women's work

A high tempo transformation since the 2000'

Among others: smaller households, blended families, labour market transformations, ageing population, increased poverty among middle-classes...

Source :Being at home today: Inhabitation practices and the transformation and blurring of French domestic living spaces